

Setting Standards with Innovations



Company Profile :

Established in the year 1972, AMIN MACHINERY PRIVATE LIMITED, is the pioneer, globally renowned and trusted manufacturer, supplier, and exporter of Welding Automation Equipment, Material Transfer Equipment and Special Purpose Machines (SPM). We have 3 decades plus experience in designing and manufacturing of positioning equipments for welding industries. Our entire products range is known for durability, high efficiency, low maintenance and longer functional life. In addition to this, we also undertake total project work right from the designing, manufacturing, till final execution of project order and, of-course, after sales services promptly and satisfactorily

We have strong designing and engineering expertise that helps us to offer our range in compliance with the industry standards and thereby, meeting the exact demands of our clients. In order to maintain the industry standards, we further keep ourselves involved with regular research works. Owing to this, we are able to build a vast customer base across Indian Subcontinent, Middle East and European countries.

Accreditation with **ISO 9001:2008** from ISC Australia coupled with **CE Certification** from UL has been an extra edge for us in the prevailing global competition scenario

Our Team :-

We have a team of 90 skilled and vast experienced professionals that assist us in meeting the exact requirements of our clients with quality range of Welding Automation Equipment, Material Transfer Equipment and Special Purpose Machines (SPM).

Infrastructure :

Backed with modern infrastructures as well as expertise of our technical team we are able to successfully meeting with the specific requirements of our clients. Again, with the right kind of technically advanced range of production machineries / equipments we are capable to meet international standards of quality, reliability and precision in our product ranges. We have

the best appropriate machines available for manufacturing our range of products.

Products Range :-

- Welding Rotators
(Conventional/Self Centering/Self Aligning type)
- Welding Positioners
- Column & Boom Manipulators
- Horizontal Turn Table
- Electric Control Panels
- Special Purpose Machine (SPM)
- Sigma Mixer / Kneader
- Hot Induction Pipe Bending Machine

Quality Policy :

To meet or exceed customer's expectation every time and continuously set higher quality norms to improve the effectiveness of the quality systems.

- Collecting and implementing customer feedbacks.
- On time delivery by taking steps to avoid bottle necks.



Welding Rotator

Capacity From 1T to 2000T

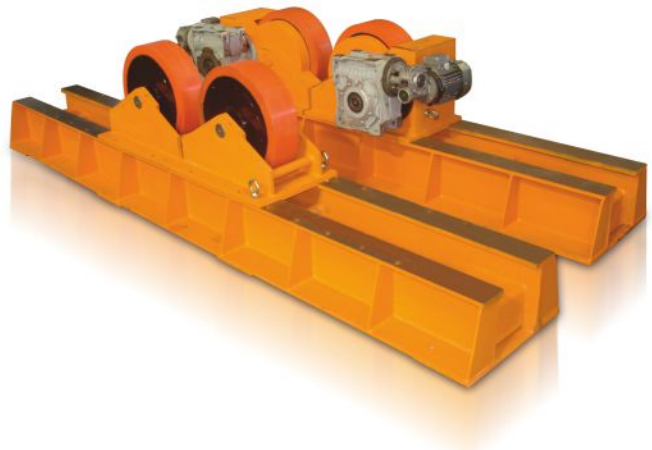
Welding Rotators are very essential equipments for heavy and light fabrication shop. They are mainly used to rotate or position the cylindrical jobs for circumferential welding (TIG / MIG/ Sub Arc) or for intricate assemblies. The machine consists of 1 No. Drive unit and 1 No. Idler unit and AC Drive Control Panel with pendant. For step less speed variation, AC frequency variable drive is used. The rollers are either made of Steel or moulded with polyurethane as per customers requirement.

Application : Welding of Pipes, Boilers, Heat Exchangers, Pressure Vessels, Mounted vessels, LPG Bullets, Barrels, Tanks etc

There are 3 types in Welding Rotator :-

1. Conventional Type :-

Main base frames are fabricated and machines. There are basically two units, the Drive and Idler. The precisely machined Wheel Brackets are bolted on the roller beds. Both the Roller Brackets have to be manually moved as per the job diameter keeping the job center fixed.



Salient Features :

- Low investment cost.
- Ideal version to start with new fabrication line.
- Most suitable for small and heavy fabrication shops.
- Simple & Sturdy design.
- Proven reliability.
- Accepts wide range of Job diameters.

2. Self Centering Type :-

The construction of this type is similar to Conventional Type except that this model has a provision to slide the Roller Brackets over the Base Frame equally in both directions through a lead screw. The rotation of lead screw can either be Manual or Motorised (Optional).

Standard Capacity Ranges :-

Load carrying capacity – 500 Kgs. to 500 Tonnes

3. Self Aligning Type :-

Self Aligning Rotators automatically adjust the roller brackets to accept any job diameters within the specified diameter range. These types of Rotators are generally used to cope with the increased production demands. These type of Rotators are ideal for jobs with more imbalanced loads and also for protecting thin walled shells.

Salient Features :

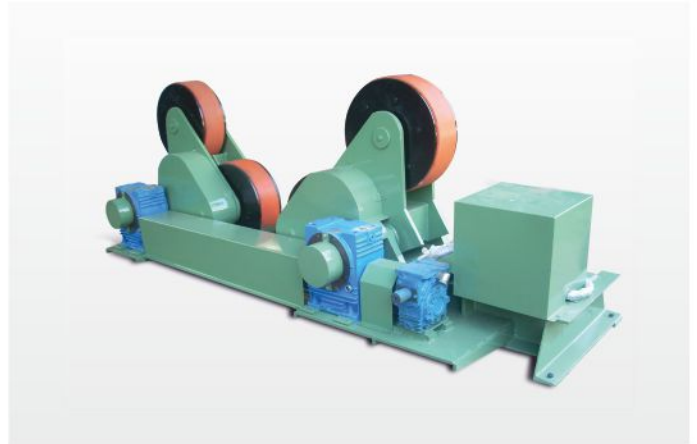
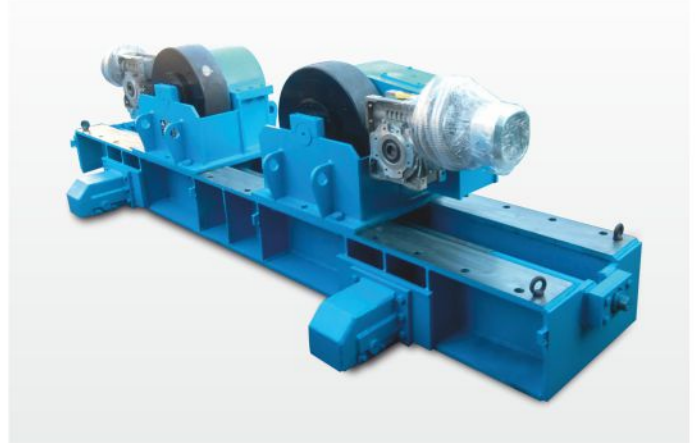
- Both the wheel brackets automatically get adjusted for all job diameters.
- Accepts complete range of job diameters in one setting.
- Centre axis of job remain stable for all job diameters.
- Wide range of Job diameters and Load capacities.
- Most suitable for 'thin walled' shells of large diameters.
- 'Four roller' contacts gives superior 'slip free' gripping for thin walled vessels
- Better acceptability to ovality of vessels compared to other models.

Standard Capacity Ranges :-

Load carrying capacity – 1Tonne to 600 Tonnes

Note (Optional) :

All types of Rotators can be Designed/Supplied with either Manual or Motorized Bogie.

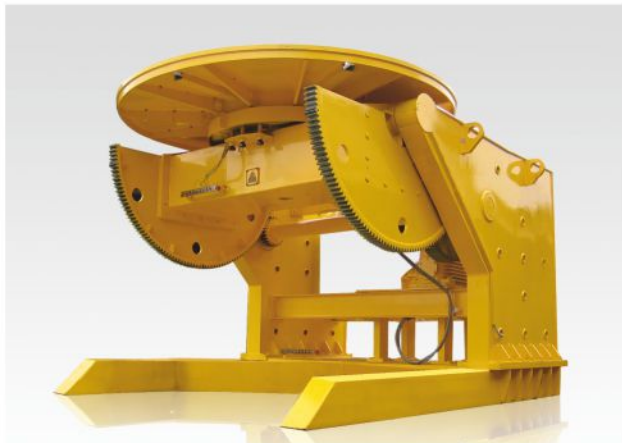


Welding Positioner

Capacity : 100 Kgs to 200 Tonnes

Positioners are mainly used to manipulate and position the jobs for easy down hand welding, independent of operator's skill. Once the job is loaded it can be manipulated conveniently to complete all the welding operations in down hand position. This reduces handling time and frequent use of crane. The job can

be tilted from 0° to 135° degree depending on the requirement of specific location of welding. Positioners can be conveniently used for complete circumferential welding, strip cladding.



Standard Capacity Ranges:

Load capacity - 100 Kgs. to 200 Tonnes

Table Tilt range – 0 to 135 degrees OR -45 degree to + 90 degrees. (Fixed / Variable Speed)

Other Options :-

Head/Tail Stock Positioner
Hydraulic operated Twin Table Positioner
Horizontal Rotary Table / Turn Table
Elevating type Positioner

Special Features of our Design :

- Extremely Stable and 'Free Standing' with the maximum rated load.
- 'Free standing' design
- Rugged and robust Design / Construction.
- Over rated, Pre-loaded and dust protected bearing arrangements.
- Spring loaded Earth return current arrangement to avoid bearing damage
- Mechanical 'Stoppers' in case of limit switch failure.

Column and Boom Manipulator

Capacity : 1m x 1m to 12m x 12m

Column and Boom Manipulator is also called as SAW Manipulator. The welding head is mounted at one end of the boom face. In all Models, the vertical movement is through Rack & Pinion with counter weight arrangement. The Counter weight and Boom assembly is held with heavy duty wire rope/leaf chain. Provision of anti-fall mechanism is a standard feature in all models. The Horizontal Boom drive movement is through rack and pinion for all models

Standard Range :-

From 1m x 1m to 12m x 12m

Other Option :-

-All models with Traveling type base

Features :

- Robust Design.
- Most suitable for Medium fabrication & vessel shops.
- Can perform wide range of applications.
- Smooth Rack & Pinion Drive for both Up/Down & Horizontal movements.
- Anti-toppling mechanism for Trolley car mounted versions.



Electric Control Panels

We are one of the most reliable name in Electrical Control Panels manufacturers and suppliers, located in Anand in the state of Gujarat (India). We offer various types of Power & Electrical control panels which include crane control panels, outdoor application, Motor Control Center, AMF Panel, PLC Panels, & Distribution boards, etc. We offer a range of superior quality electrical panels, that are manufactured by us using optimum grade material. Designed as per international standards, our range is known for their high performance, reliability and durability. Available at most competitive prices, these electric panels are provided in different specifications to meet the diverse requirements of clients.

Our Product Range :

- Lighting Distribution Boards
- ACB Panels
- APFC Panels
- Relay Panels, Changeover Panels
- Power Factor Control Panels
- AMF panels
- Contactor panel
- D.G. Synchronize Panel
- Isolators/Relay/Metering Panel.
- PLC Panels



Motorised Material Transfer Wagon / Trolley

Motorized Material Transfer Wagon/Trolley is meant for transferring material from one bay (shop) to another. Wagon/Trolley moves on Indian standard rail section grouted in ground. Material Transfer Wagons / Trolleys are manufactured with load carrying capacities from 1MT to 500 MT capacities as per customer's requirement.

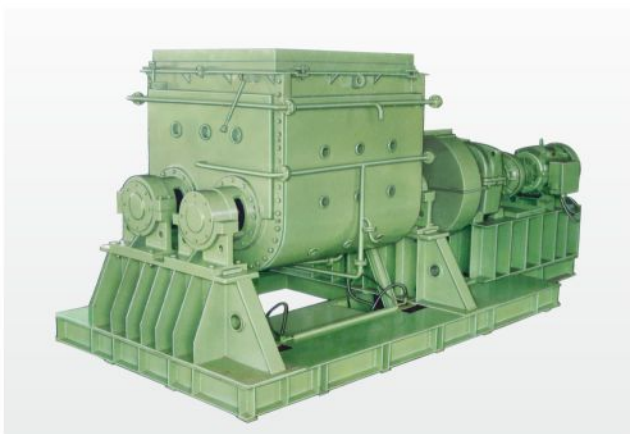
Salient features of the Transfer Wagon / Trolley are as follows:

- Transfer Wagon/Trolley has two drive wheels and two idler wheels. Power through both drive wheels has separate gear boxes and electric motors. Both motors are synchronized through AC Variable Frequency Drive. Depending upon the load bearing capacity of transfer wagon/trolley, number of drive wheels and idler wheels are provided
- Radio Remote Control is provided to move wagon/trolley to and fro.
- Spring buffers / Disc springs, Two way limit switches are given as safety measures.
- Under voltage / over voltage protection is provided into control panel.
- Transfer Wagon / Trolley is equipped with Siren and Bacon Lights.
- Motorised Cable Reeling Drum is provided for cable



Kneader / Sigma Mixer

Capacity : 0.5 Ltr. to 4500 Ltrs.



Sigma mixer is also referred as Kneader and is used in food industry, pharmaceutical industry, soap industry and chemical industry at large. These are used to solve the purpose of mixing and kneading highly viscous materials.

- Kneader consists of different blades moving at different speeds in opposite directions to properly mix the carrying material. The Z arm or Sigma blade is designed for uniform mixing and cross flow of materials. Sigma blades are solidly casted, machined, x ray tested before fitting.
- We manufacture sigma mixer with fully SS, Partly SS and fully MS constructions and also cater to the needs of customized manufacturing of Sigma Mixer.
- The mixer is supplied with jacket or without jacket as per the requirement of the customer..
- Discharge is by hydraulic door opening system or through screw rod system.
- Minimum uniform gap is maintained between the trough and the blades.



AMIN MACHINERY PVT. LTD.

REGD. OFFICE & WORKS:
C-1/12. G.I.D.C. Estate, Vitthal Udyognagar - 388 121
Gujarat (INDIA)
Phone : +91 2692 236029, 235124 • Fax : +91 2692 237443
E-mail : aminmachinery@yahoo.com, aminpanels@yahoo.com
Web Site : www.aminmachinery.com www.rotator.co.in



ISO 9001-2008

