

INDIA'S No 1 Manufacturer of Welding Tables & Fixtures

FIXTO
FIXTURE TOOLS

2021

PRECISION. QUALITY. ASSURANCE.

**Choose Fixto for all your modular
assembly table needs.**



FIXTO Modular Welding Table

FIXTO is the most affordable modular Welding Table on the market. The amount of time and money you'll save in reduced fixturing time, and improved repeatability makes FIXTO a sensible, and wise investment.

The innovative plate, slot, and hole system of the FIXTO Table provides multiple clamping surfaces, channels, and points, so whether you're building a dedicated fixture, short run fixture, or one-time use fixtures, the FIXTO adapts to your work needs.

The FIXTO Table is modular, so YOU can adapt the table, right in your shop, without ordering an expensive custom designed table. The FIXTO plates can be removed, and reconfigured to the desired size, and form.

You work for your customers, we work for YOU. Our design team works continuously and tirelessly to develop new tools to help you fixture more efficiently so you can get the best value and performance from your FIXTO Table and Clamps.

Our Core Values

Growth:

We aspire to achieve great heights of success by multiplying our products, clients & collaborations thereby magnifying growth

Creativity:

We believe in creating unique & affordable products which are helpful to our clients

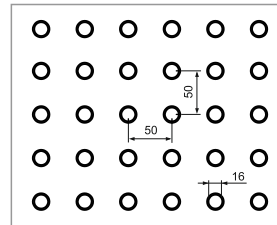
Contribution:

We experience satisfaction of helping people, community & country by sharing a part of our success

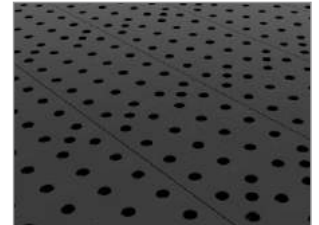
Complete access to the tabletop, multiple clamping surfaces, and standard clamps, are key to greater efficiency in the set-up and tear down of projects. The patented FIXTO™ Table design gives you the flexibility to adapt to each project, big or small. You will work more safely and more efficiently while maintaining accuracy and consistency.

FIXTO Welding Table Specification

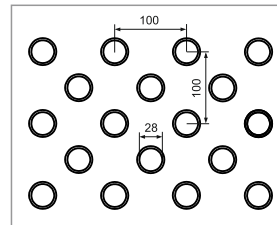
Technical Specification	Details
Flatness	0.3/1000mm
Hole Separation	D16 50/ D28 100 ± 0.038mm
Top plate thickness	D16 Ø15mm / 24 mm D28
Hole Diameter	D16 Ø16mm / 28mm D28
Surface Material	STEEL IS2062
Frame Material	STEEL IS2063
Nitriding case Depth	0.01-0.02mm
Surface Hardness	HV 450
Coefficient of friction	0.37
Loading Capacity	1- 8 ton



D16 Dimensional Details



Nitrided Table Top



D28 Dimensional Details



Calibration Certificate

FIXTO Welding Table Benefits

Highly rigid base frame specially designed to withstand against heavy fabrication load with well machined surface

Top surface plate with optimum toughness value ensuring zero crack formation against fatigue loading and durability of table

Table top processed with Nitriding(a heat treatment process) offers anti corrosive, Anti spatter and wear resistive platform

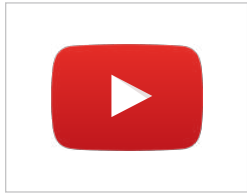
Material hardness maintained to HV 450 to avoid plastic deformation and indentation of surface

Well CNC machined holes and innovative design of clamping accessories combinainely gives study fixturing with consistency

FIXTO Modular welding table is better than cast iron tables as we can change, expand and join the top plates for flexibility of table size.

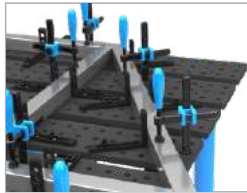
FIXTO has placed its entire line of standard clamping products in a CAD library, which customers can use to save valuable time and increase fixture productivity

FIXTO provides after sales support with 3D modeling, fixture example videos, Assembly drawings etc.



Video Galley

Pg 3



Fixture Examples

Pg 5



Rotary Positioner

Pg 12



D16 Welding Tables

Pg 14



Storage Cabinet

Pg 18



Welding Table + Clamps

Pg 19



3D Bracket

Pg 24



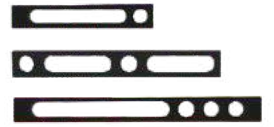
Square Blocks

Pg 25



Right Angle Brackets

Pg 25



Straight Flat Stop

Pg 26



Clamping Square

Pg 26



Flat Angle

Pg 27



Universal Angular Locator

Pg 28



Ball Lock Bolt

Pg 29



Insert Clamp

Pg 29



Degree Clamp

Pg 30



Jaw Pliers

Pg 30



Toggle Clamps

Pg 31



Malleable Right Angle

Pg 32



Adjustable Spacer

Pg 32



Locator

Pg 33



V Blocks

Pg 33



Off Center Pad

Pg 34



MAG Bolt

Pg 35



Magnet Square

Pg 35



Clamping Sets

Pg 36



D28 Welding Tables

Pg 41

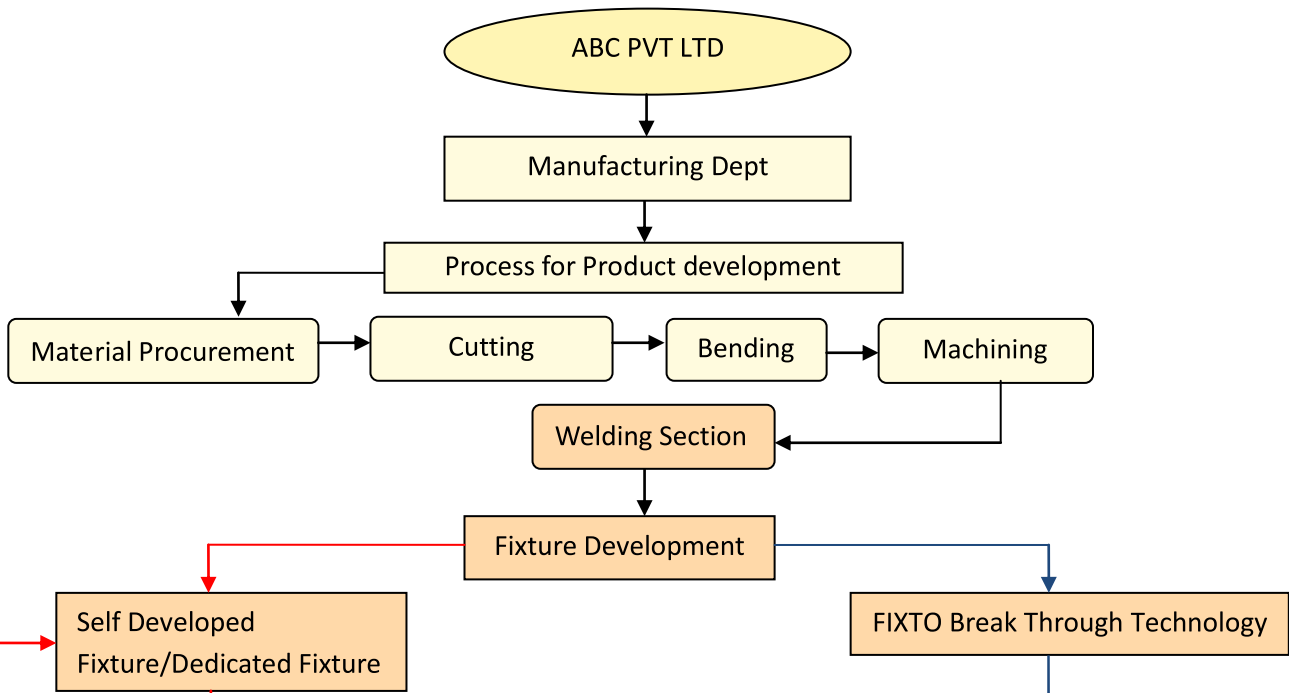


D28 Clamps

Pg 47

This process flow shows that what loses people facing because of self developed fixture and what benefit you will get with FIXTO Fixtures

Fabrication Process Flow



Problems people facing

- 1. Distortion, 2. Waste of Time, 3. Rejection, 4. Manpower, 5. Health Hazards for welder

When Product Changed

Previous Fixture gets Scrap

Result Invest Again & Again For New Fixture

- Average cost of self developed fixture = Rs 150000
- Every year company develop 20 products
- Annual investment on fixture = Rs 3000000

Solution with FIXTO fixtures

Anti-corrosion, spatter free Surface, Control Distortion, No extra manpower, No rejection,

When Product Change

Only Re-Positioning Of Same Fixture

Result No Re-Investment for New Fixtures

- Company can save investment of Rs 3000000
- You can make multiple fixtures with same clamps

VIDEO GALLERY



Client experience with FIXTO Tables

Please click/touch on the  link to play the video



How To Start Making Fixture With FIXTO Welding Tables & Clamps



FIXTO Rotary Positioner Application



FIXTO Welcart Application



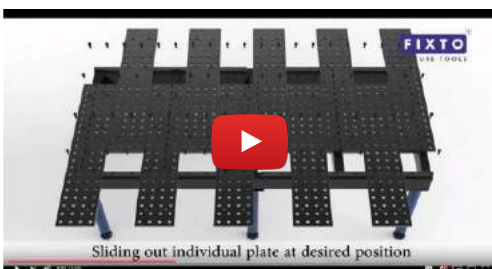
How to join two welding tables together



DJS Racing Team Experience With FIXTO



How to assemble FIXTO Welding Table + Welding spatter testing



FIXTO Table Top Extension Application



FIXTO MAGPRO Application



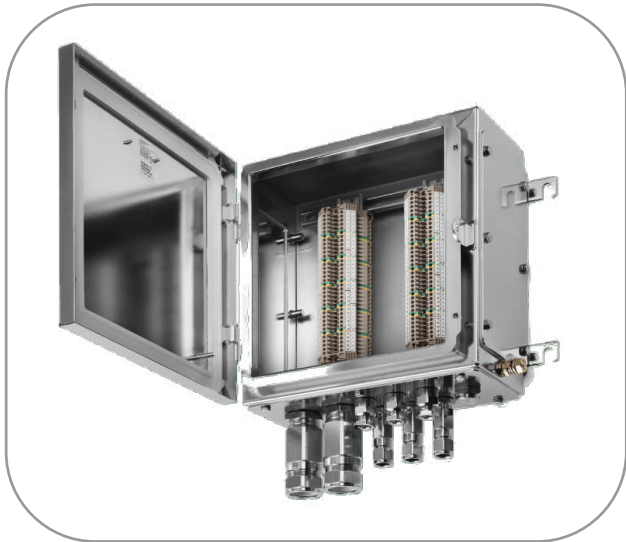
FIXTO Sheet Metal Welding Fixture Application



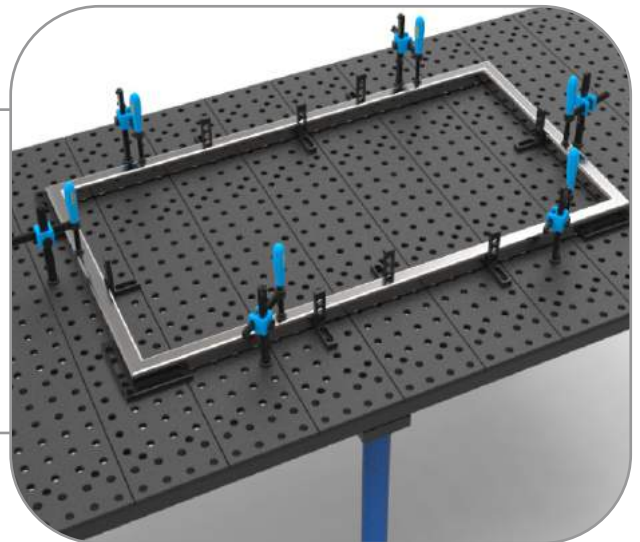
Please click/touch on the  link to play the video



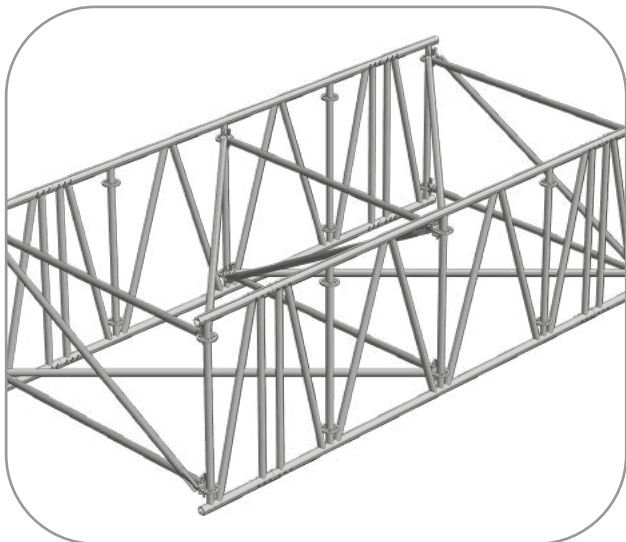
ELECTRIC PANEL BOX FIXTURE



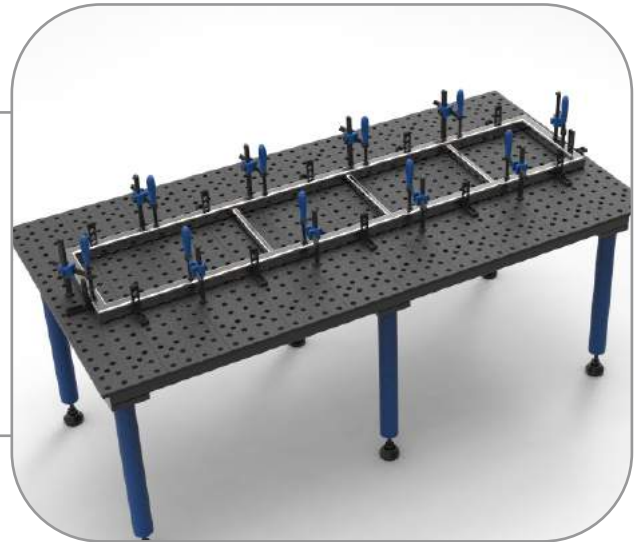
FURNITURE INDUSTRY



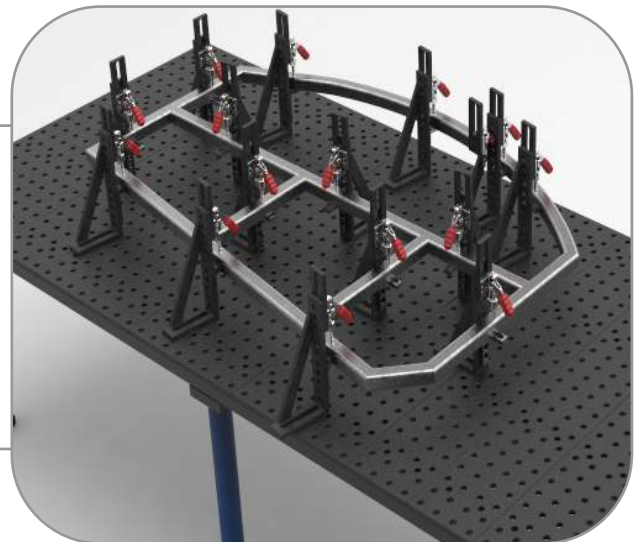
SCAFFOLDING FIXTURE



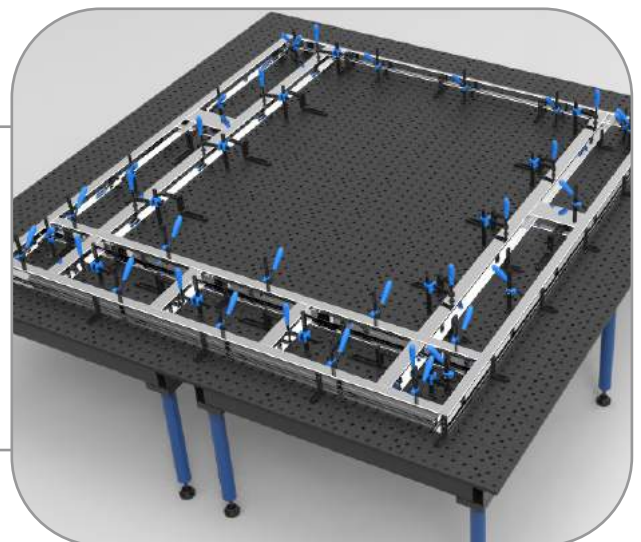
SURGICAL PRODUCTS



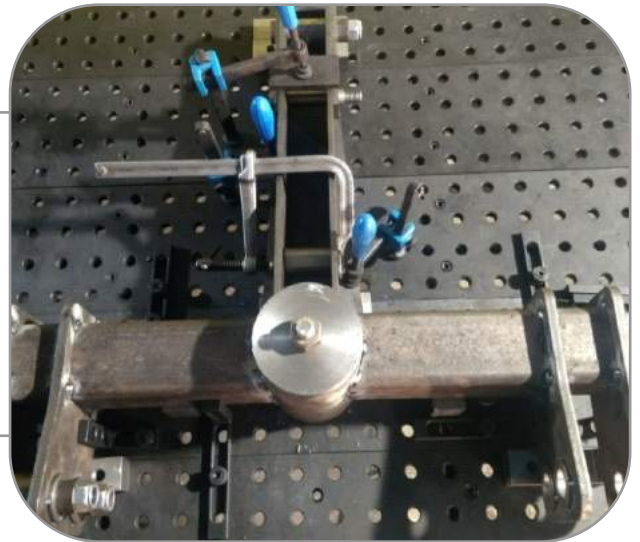
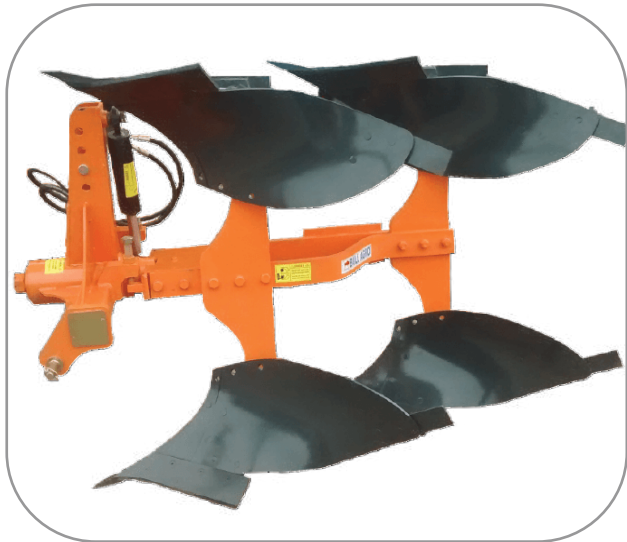
AUTOMOBILE INDUSTRY



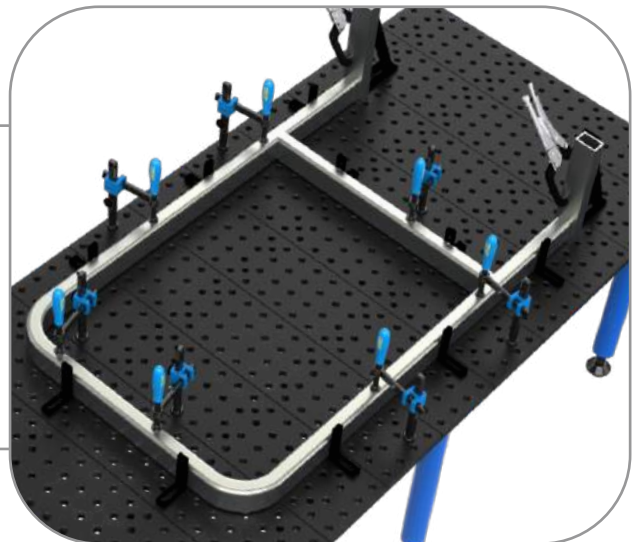
FRENCH DOOR FIXTURE



AGRICULTURE PRODUCTS



FITNESS EQUIPMENT FIXTURE



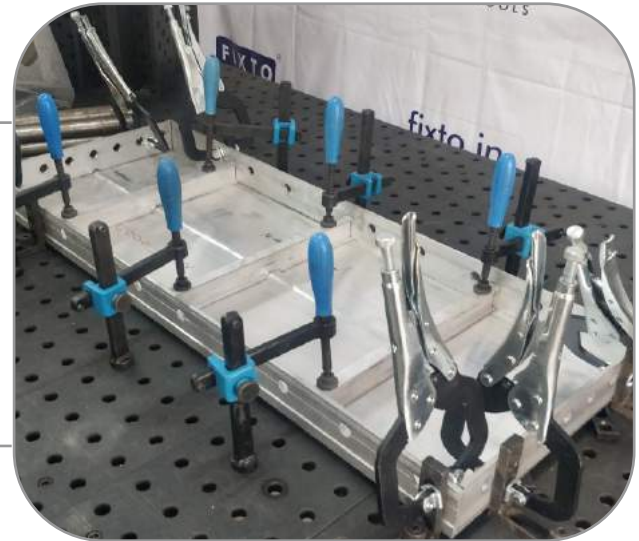
BAKERY PRODUCTS



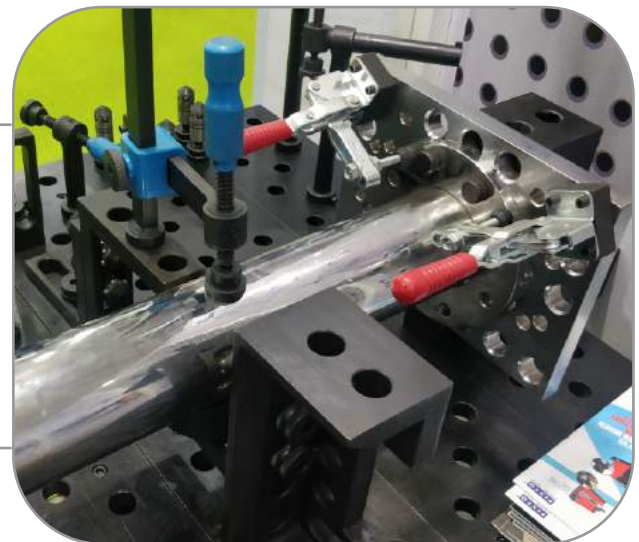
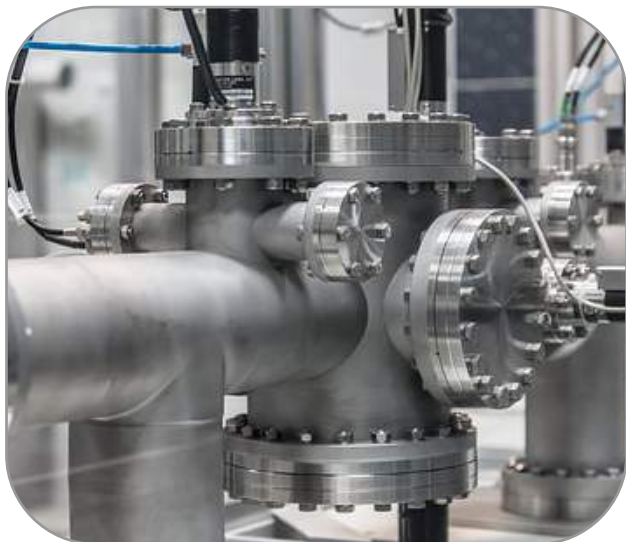
VMC MACHINE PANEL FIXTURES



MIVAN FRAME FIXTURE

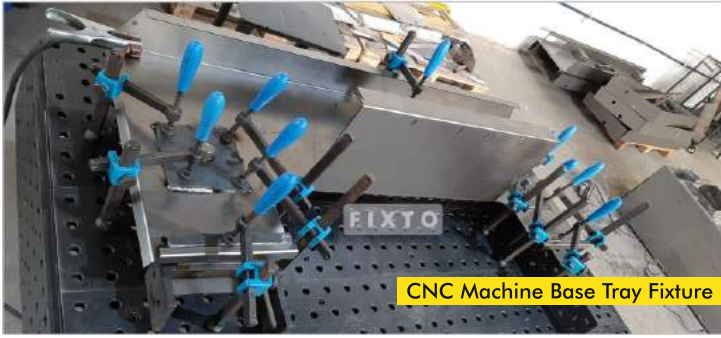


OIL & GAS INDUSTRY





CNC Machine Base Tray Fixture



CNC Machine Base Tray Fixture



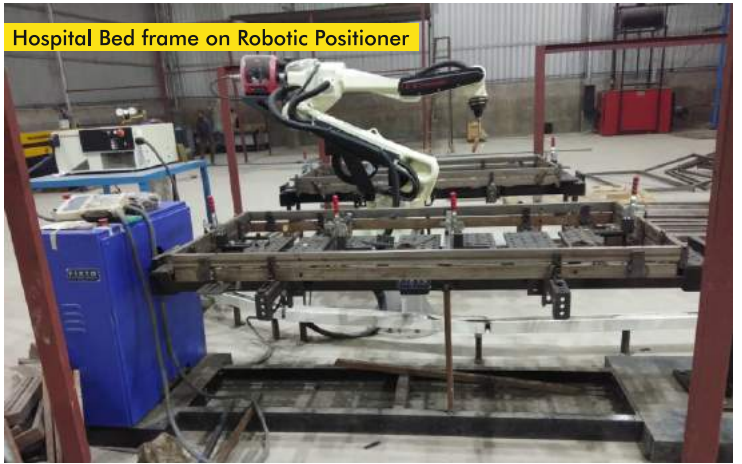
Metro Project on 4m x 2m Table



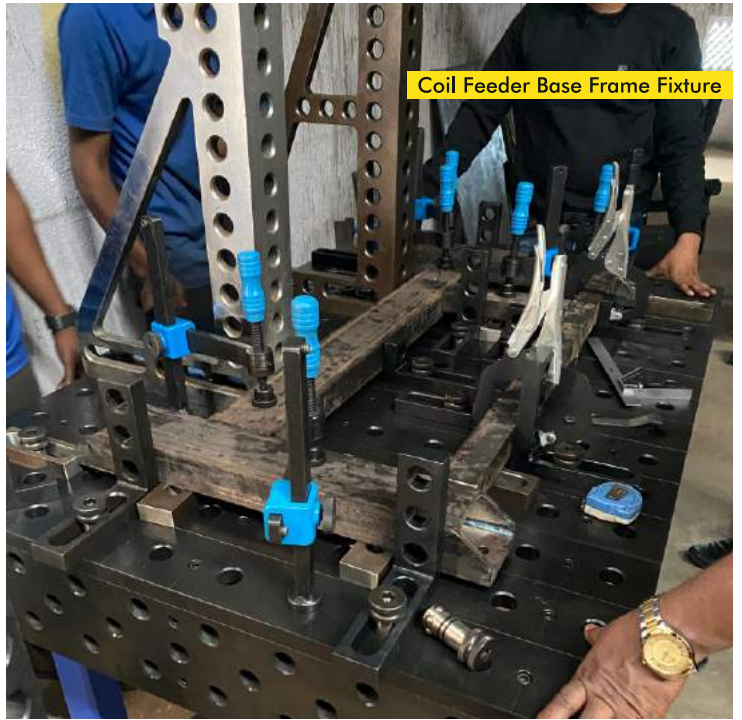
Defence Project with L&T



SPM Machine Panel Fixture with Positioner



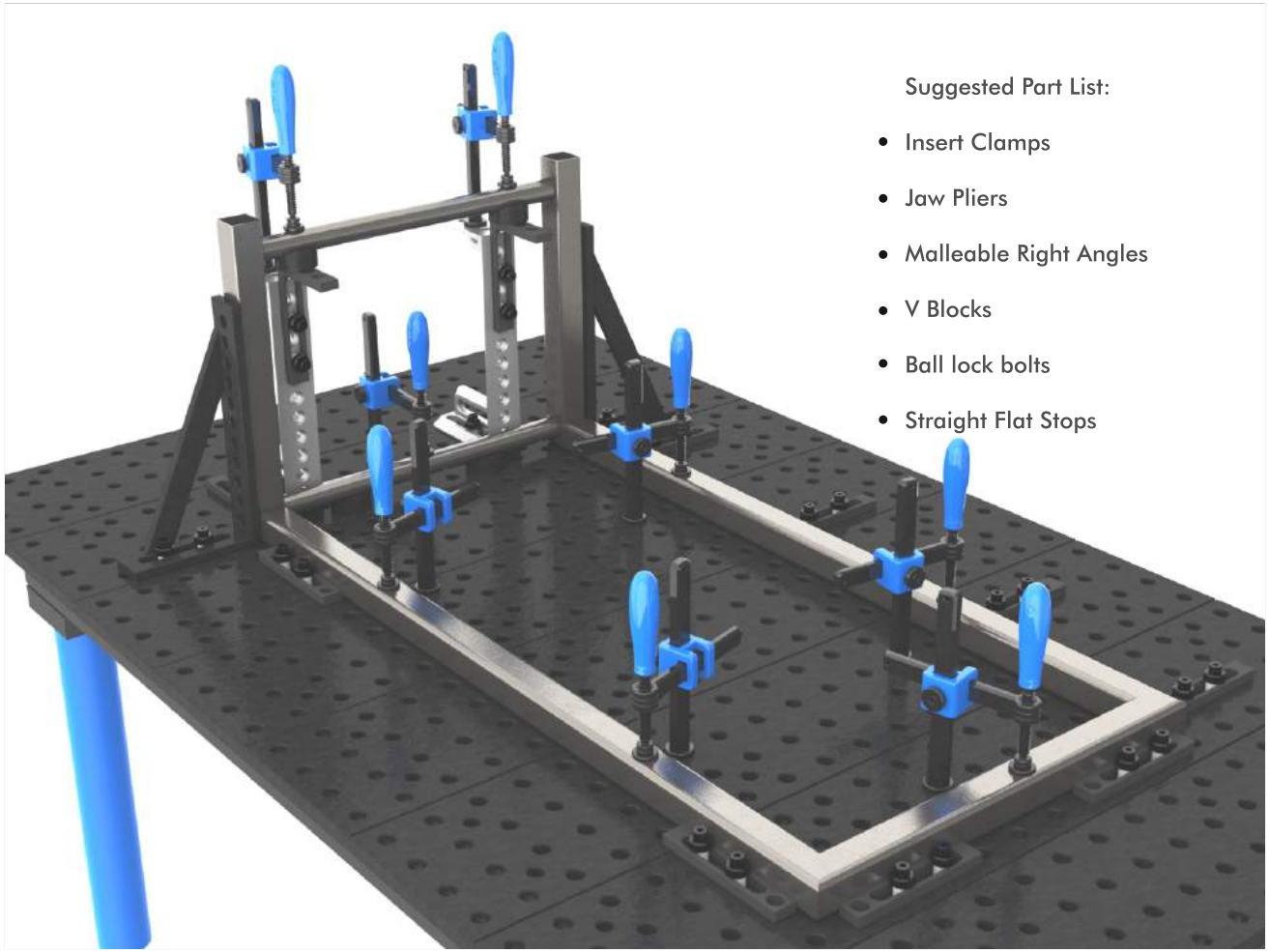
Hospital Bed frame on Robotic Positioner



Coil Feeder Base Frame Fixture

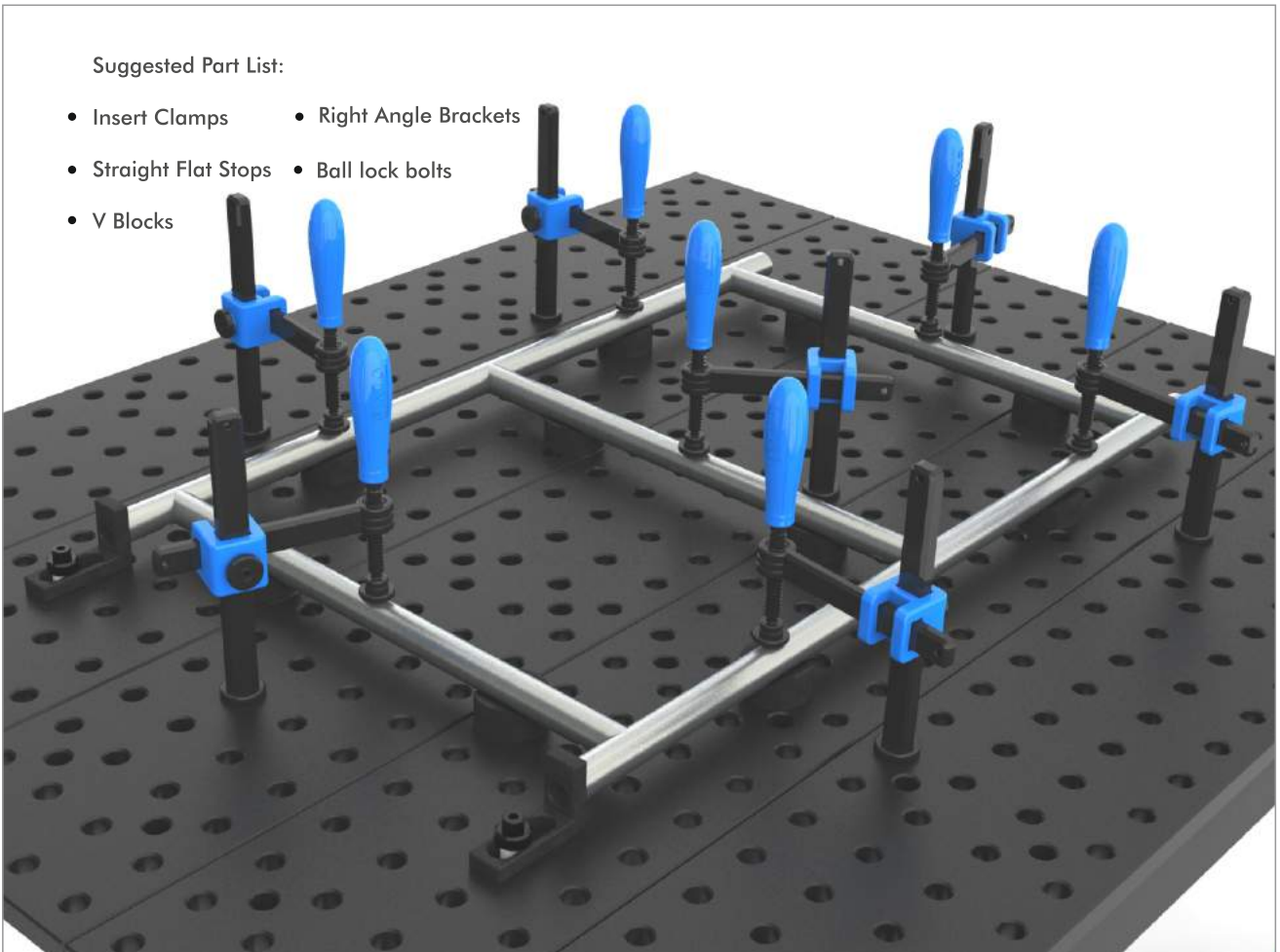


Government Project with Robotic Welding



Suggested Part List:

- Insert Clamps
- Jaw Pliers
- Malleable Right Angles
- V Blocks
- Ball lock bolts
- Straight Flat Stops

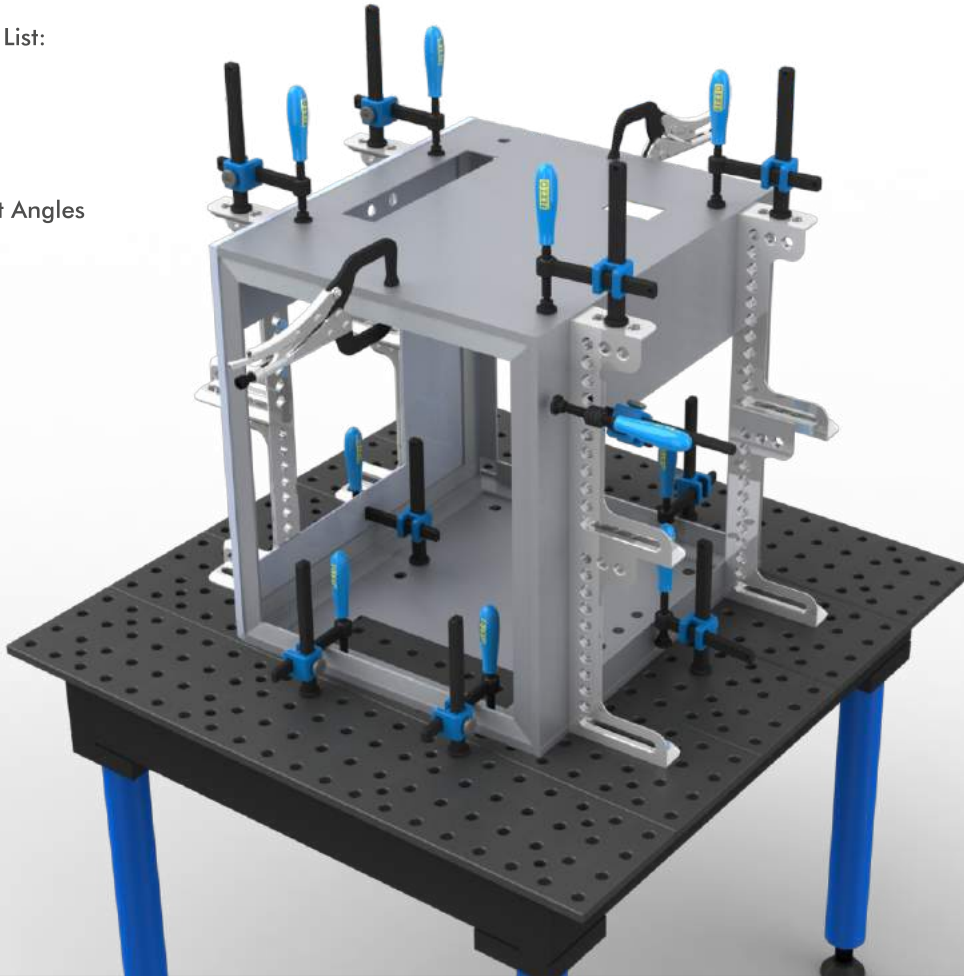


Suggested Part List:

- Insert Clamps
- Right Angle Brackets
- Straight Flat Stops
- Ball lock bolts
- V Blocks

Suggested Part List:

- Insert Clamps
- Jaw Pliers
- Malleable Right Angles
- Ball lock bolts



Electrical Panel Box Welding Fixture

Suggested Part List:

- Jaw Pliers
- Right Angle Brackets
- Ball lock bolts
- Straight Flat Stops



FIXTO[®] **D16 SERIES**





Horizontally mount your FIXTO® Welding Tabletop to the New FIXTO® Rotary Positioner for plane rotation of your welding tabletop. The gear driven free-turning mechanism allows for smooth operation, superior stability and controlled turning and positioning at precise 15° increments with positive manual locking.

The FIXTO® Rotary Positioner allows you to rotate your weld fixture to the best ergonomic position for worker safety and comfort, and reduced operator fatigue. Position your fixture for better weld access, accuracy, and productivity for both manual and robotic welding operations.

The FIXTO® Rotary Positioner is universal, with an adjustable base to accommodate most standard FIXTO® Welding Tabletops. The Positioner features four swiveling, locking casters, and four leveling feet for setup at dedicated, or alternating locations in the shop.



Welding in taper position



Welding in flat position

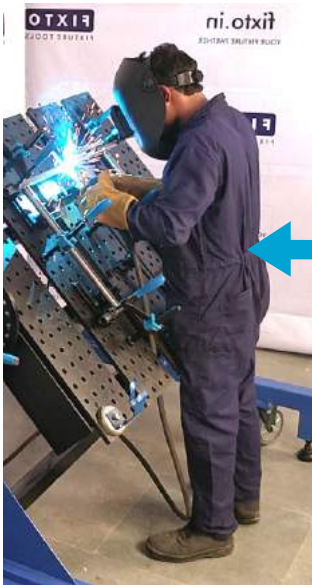
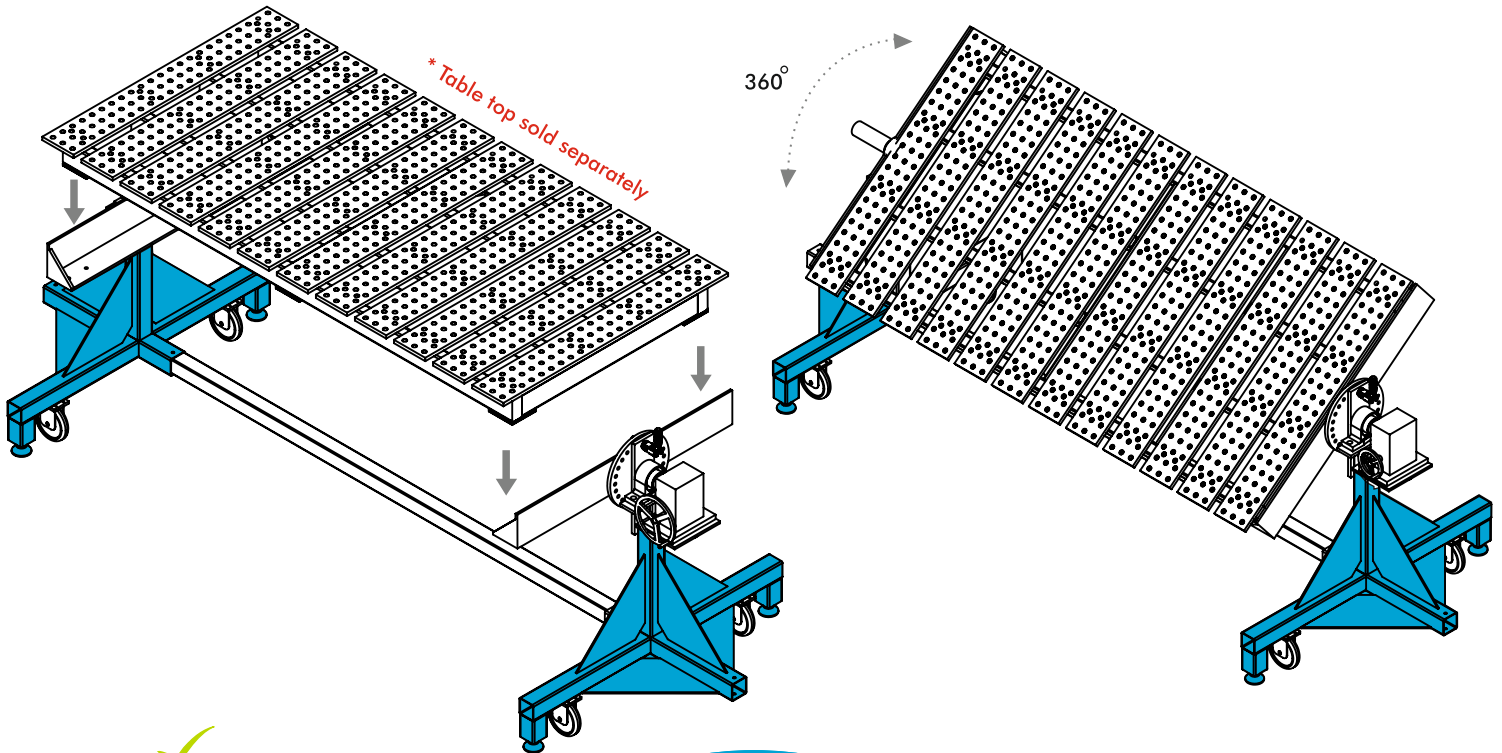
Continue Surface

Model No.	Width	Depth	Height
WT-2412	2400	1200	950
WT-2010	2000	1000	
WT-1510	1500	1000	
WT-1212	1200	1200	
WT-1010	1000	1000	

Table Top Dimensions

Slotted Surface

Model No.	Width	Depth	Height
WT-500	1500	2950	950
WT-400	1200	2450	
WT-300	1000	1950	
WT-200	1200	1200	
WT-100	1000	950	



Protection of health & safety

- Avoidance of overloading and poor posture, which means less staff absenteeism
- Ergonomically-optimised work environment
- Employee with physical constraint can perform tasks that they could not perform without the positioners (possibly investment aid possible by means of funding)
- Dangerous handling of work pieces with a crane is significantly reduced

Increase the quality level

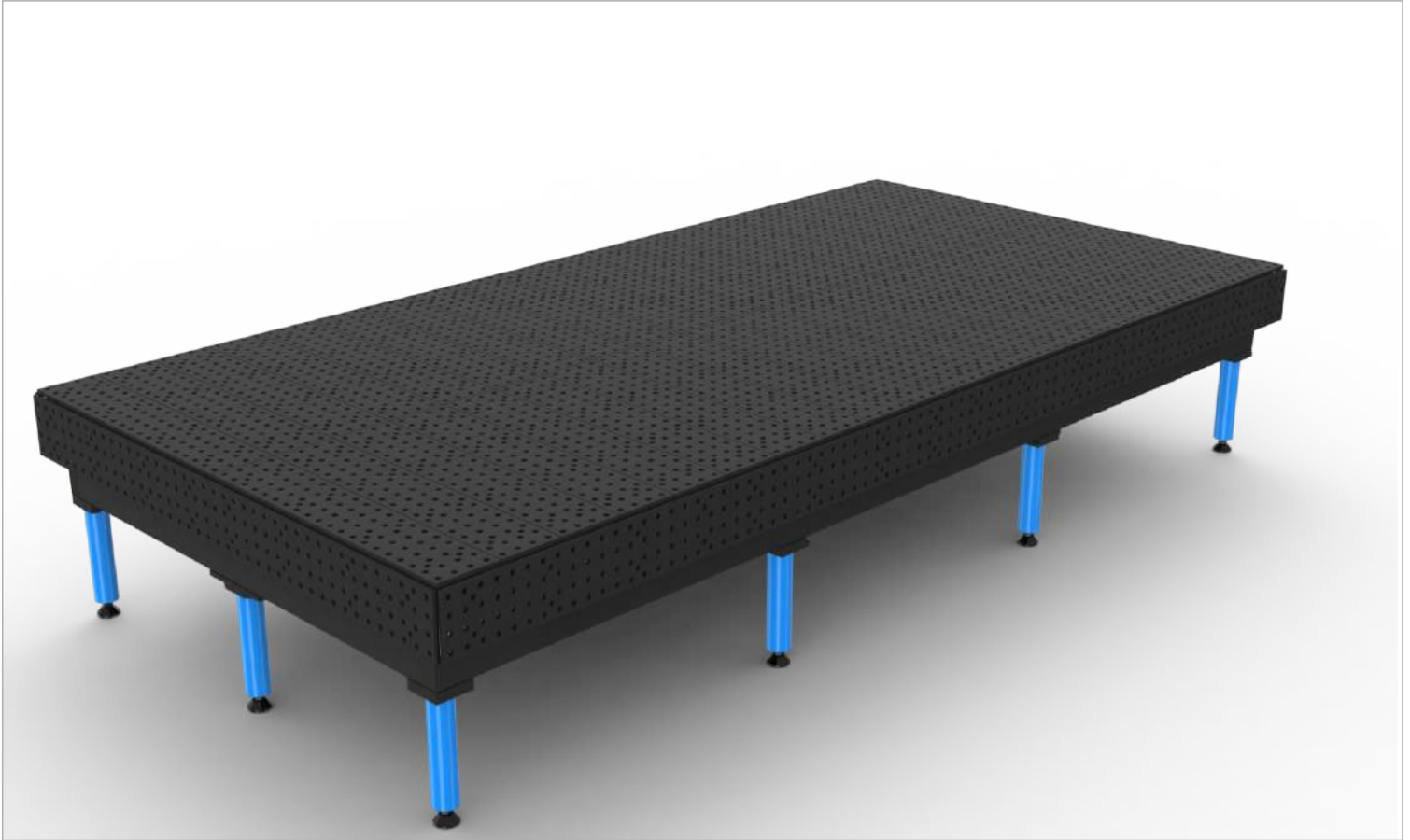
- Working in the ideal position and at the ideal height
- Less Welding distortion through optimized welding sequences

Increase productivity

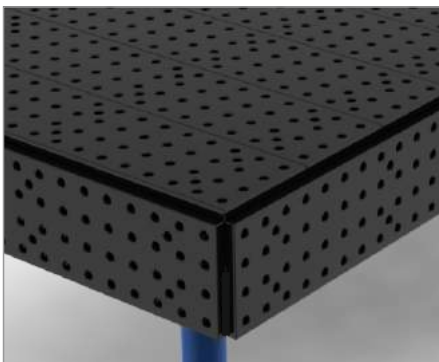
- Multiple, time-consuming rotating and turning of the work pieces, for example with a crane, is eliminated for a major reduction in non productive time and a significant increase in productivity
- Higher melting deposition efficiency when welding as most seams can be performed in the optimal position (flat position)
- Higher work performance due to fatigue-free working position

The New FIXTO Giant table has a continuous plate tabletop surface with 33% more machined holes than the standard, slotted FIXTO Tables, for a maximized work surface.

Use the FIXTO Giant table to Set-up heavy duty, large, or complex fixtures, or set-up more than one fixture at a time. Utilize the additional holes for clamping at multiple points for greater fixturing accuracy.



Model No.	Finish	Width	Depth	Height	Loading Capacity
ST-4020	Non Nitrided	4000	2000	900/750	4000 kg
ST-3020		3000			
ST-2020		2000			
NST-4020	Nitrided	4000			
NST-3020		3000			
NST-2020		2000			



3D option for side clamping

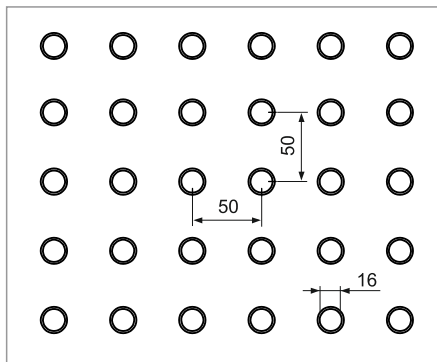
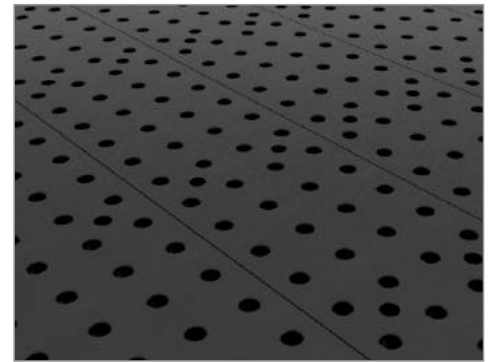


Table top specification



Continuous-plate tabletop surface with 33% more CNC machined holes.



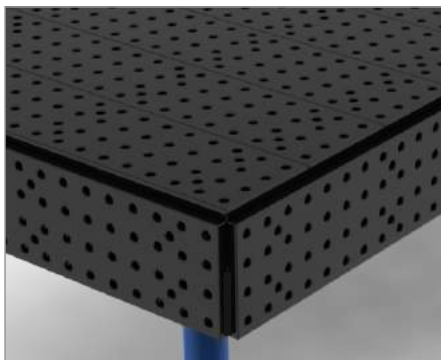
Legs + Leveling Pad

Legs Options



Legs + Castor wheel with Breaking System

Model No.	Finish	Width	Depth	Height	Loading Capacity
ST-3015	Non Nitrided	3000	1500	900/750	3000 kg
ST-2412		2400	1200		2000 kg
ST-2010		2000	1000		1800 kg
ST-1510		1500	1000		1000 kg
ST-1212		1200	1200		1000 kg
ST-1010		1000	1000		800 kg
NST-3015	Nitrided	3000	1500	900/750	3000 kg
NST-2412		2400	1200		2000 kg
NST-2010		2000	1000		1800 kg
NST-1510		1500	1000		1000 kg
NST-1212		1200	1200		1000 kg
NST-1010	1000	1000	800 kg		



3D option for side clamping

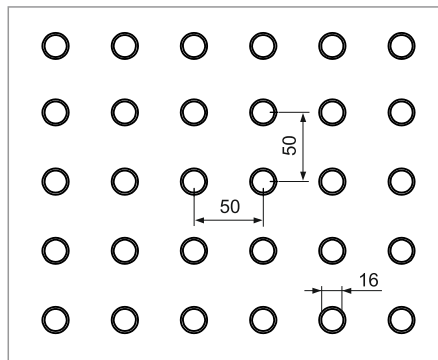
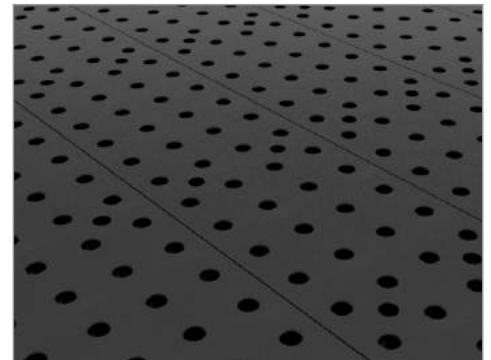


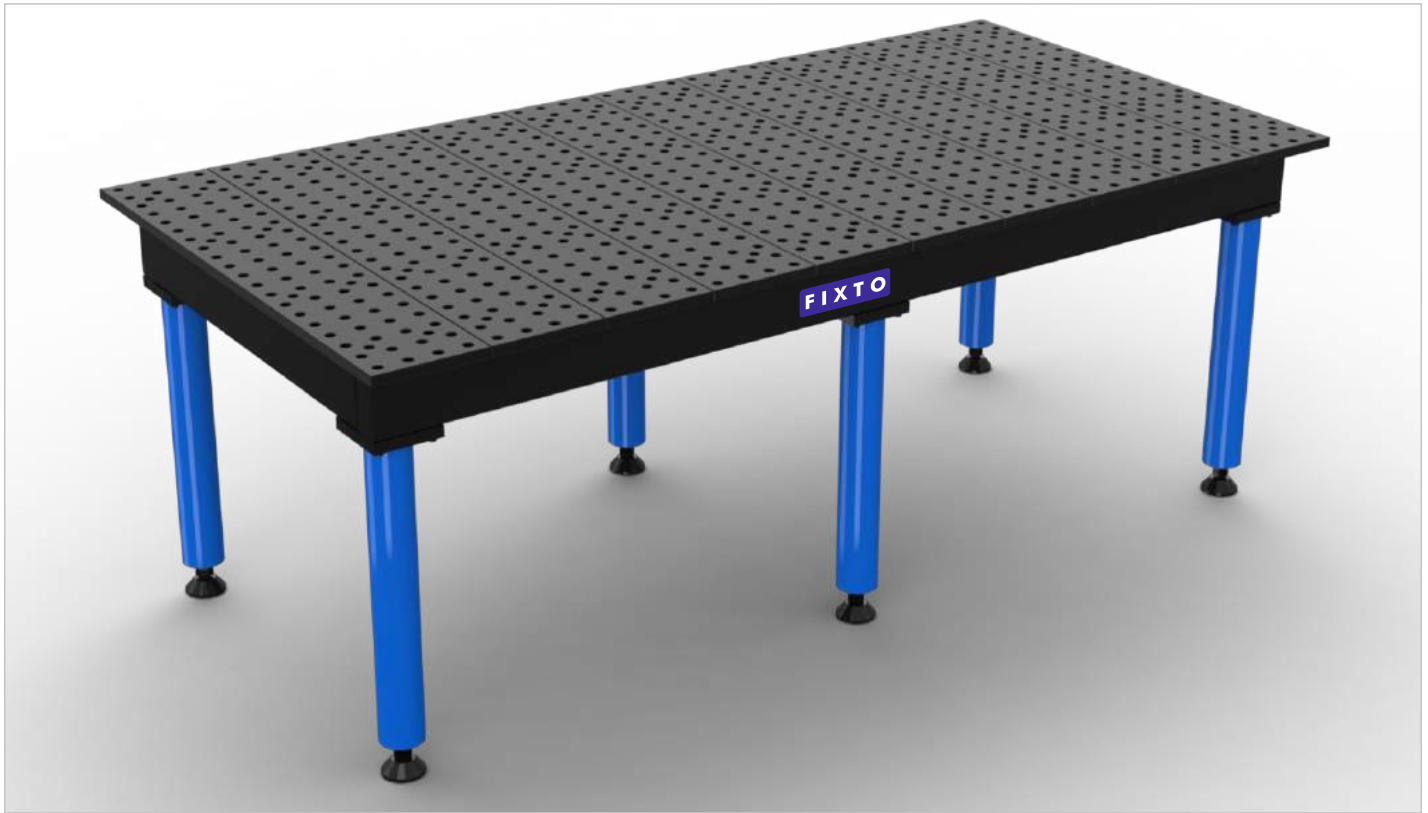
Table top specification



Continuous-plate tabletop surface with 33% more CNC machined holes.

Nitrided (Heat-Treated) Tabletop

The nitriding (heat-treating) process is a mechanical polish and post saltbath oxidative treatment. The benefits of this process include: Anti-Spatter, Corrosion Protection, and resistance to wear, lubricity and fatigue strength.



Model No.	Finish	Width	Depth	Height	Loading Capacity
WT-3015	Non Nitrided	3000	1500	900/750	3000 kg
WT-2412		2400	1200		2000 kg
WT-2010		2000	1000		1800 kg
WT-1510		1500	1000		1000 kg
WT-1212		1200	1200		1000 kg
WT-1010		1000	1000		800 kg
NWT-3015	Nitrided	3000	1500	900/750	3000 kg
NWT-2412		2400	1200		2000 kg
NWT-2010		2000	1000		1800 kg
NWT-1510		1500	1000		1000 kg
NWT-1212		1200	1200		1000 kg
NWT-1010		1000	1000		800 kg



Legs + Leveling Pad

Legs Options



Legs + Castor wheel with Breaking System

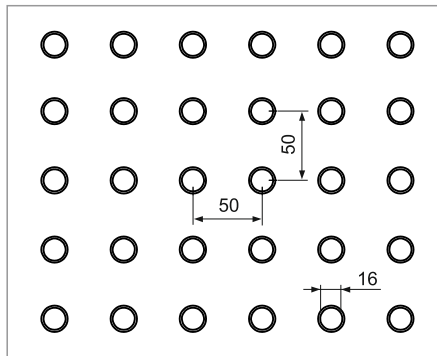
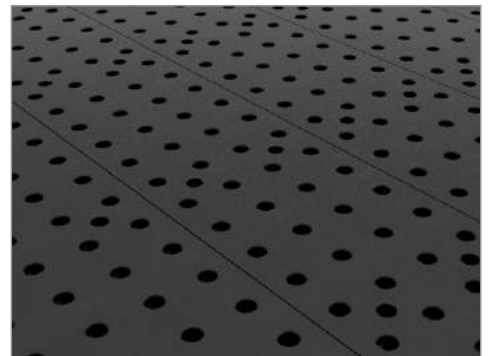
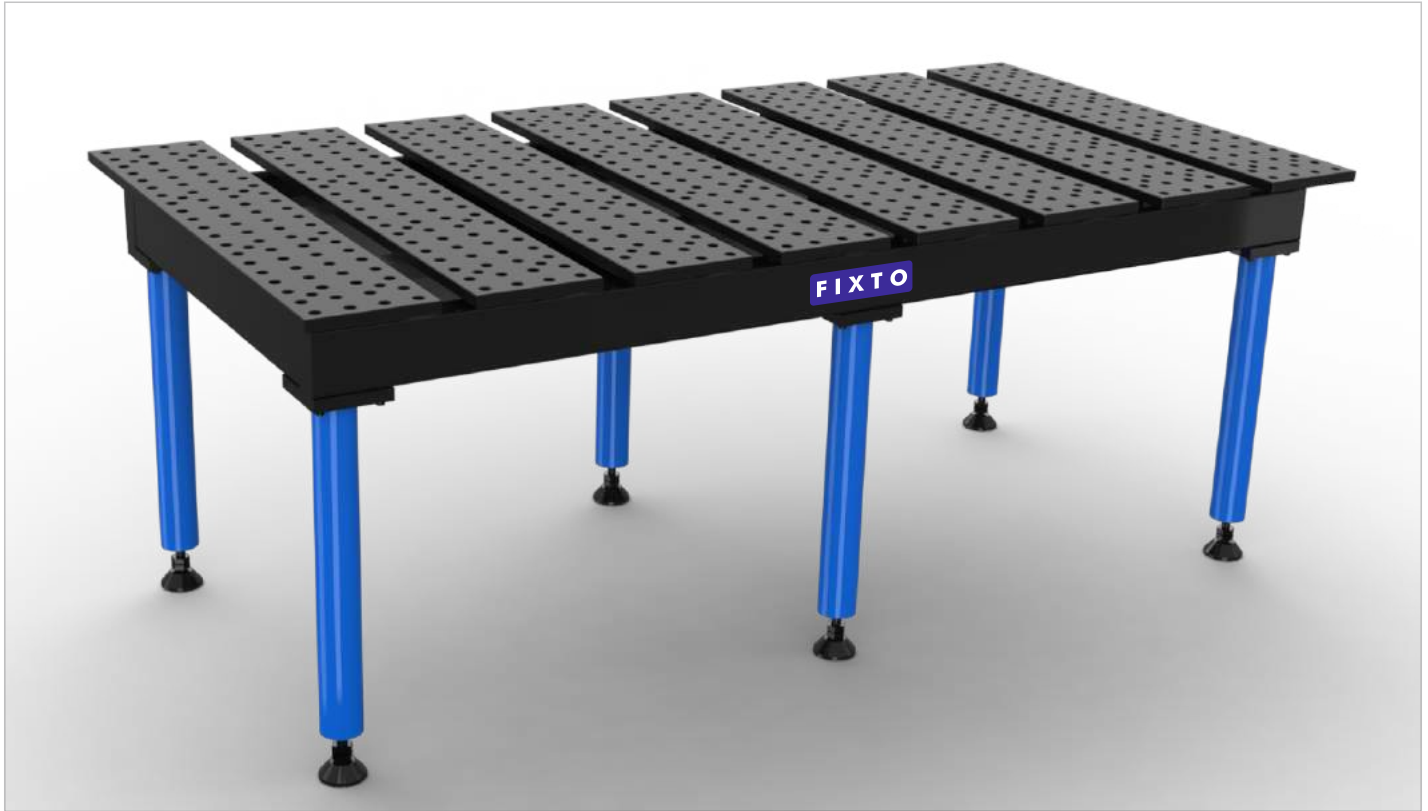


Table top specification



Continuous-plate tabletop surface with 33% more CNC machined holes.



Model No.	Finish	Width	Depth	Height	Loading Capacity
WT-500	Non Nitrided	2950	1500	900/750	2500 kg
WT-400		2450	1200		2000 kg
WT-300		1950	1000		1800 kg
WT-200		1200	1200		1000 kg
WT-100		950	1000		800 kg
NWT-500	Nitrided	2950	1500		2500 kg
NWT-400		2450	1200		2000 kg
NWT-300		1950	1000		1800 kg
NWT-200		1200	1200		1000 kg
NWT-100		950	1000		800 kg

Legs Options



Legs + Leveling Pad



Legs + Castor wheel with Breaking System

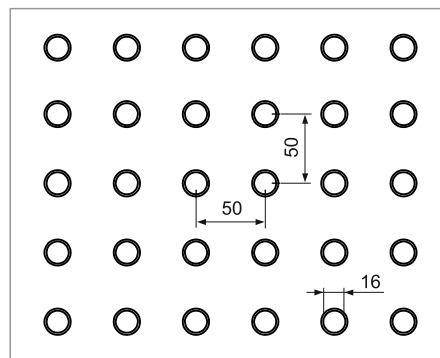
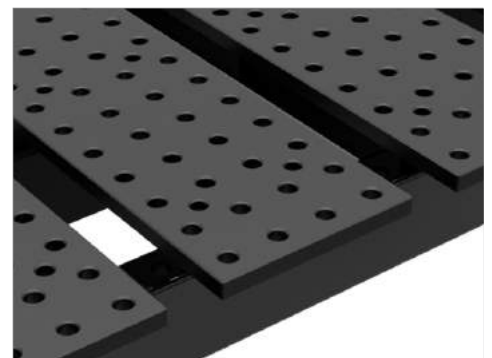


Table top specification



50 mm gap between 2 top plates provides channels for standard clamps and components.

MODULAR WELDING TABLES WITH STORAGE CABINET

➤ Create storage space below your welding table with the handy Storage Cabinet by FIXTO

➤ Cabinet Size - H 500 x W 480 X D 400



➤ The totally enclosed design protects the drawer contents from dirt and weld spatters.

➤ The Storage Cabinet has a total maximum load capacity of approx. 60 Kg. each drawer can take 15-20 Kg.



➤ Self assembly instructions are provided and you can easily attach the assembled Storage Cabinet to your welding table.

➤ Create and organise more storage space with the FIXTO storage cabinet and always have your tools at hand

MODULAR WELDING TABLES WITH STANDARD CLAMPING SET

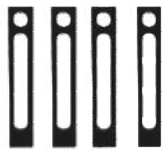
MODULAR WELDING TABLE - W 1000 x D 1000 X H 750



CLAMP SET A



Model No.	Quantity
IC 200	4 Nos



Model No.	Quantity
SFS1590	4 Nos



Model No.	Quantity
RAB725	4 Nos



Model No.	Quantity
RAB721	4 Nos



Model No.	Quantity
BLB27	12 Nos

FREE ACCESSORIES



Allen Key Wrench



Brush



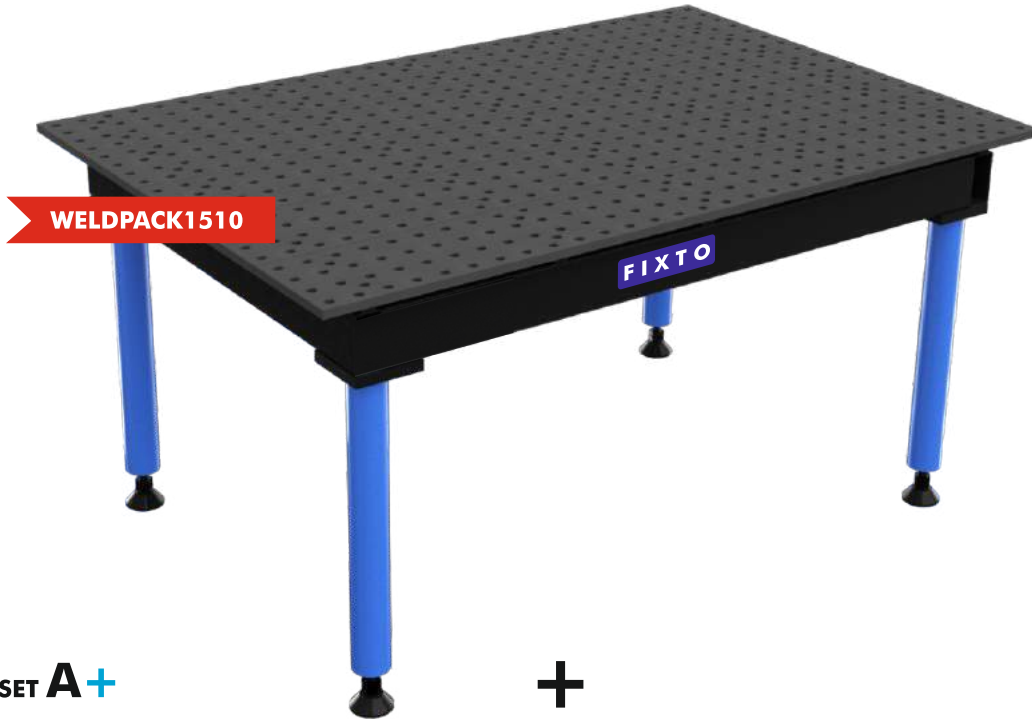
Instruction Manual



Video Guide

MODULAR WELDING TABLES WITH STANDARD CLAMPING SET

➤➤ **MODULAR WELDING TABLE - W 1500 x D 1000 X H 750**



➤➤ **CLAMP SET A+**

Model No.	Quantity
IC 200	6 Nos

Model No.	Quantity
DC 200	2 Nos

Model No.	Quantity
VB 120	4 Nos

Model No.	Quantity
BLB27	18 Nos

Model No.	Quantity
SFS1590	4 Nos

Model No.	Quantity
PL 100	2 Nos

Model No.	Quantity
RAB153	2 Nos

Model No.	Quantity
RAB 721	4 Nos

Model No.	Quantity
RAB725	4 Nos

➤➤ **FREE ACCESSORIES**



Allen Key Wrench



Brush



Instruction Manual

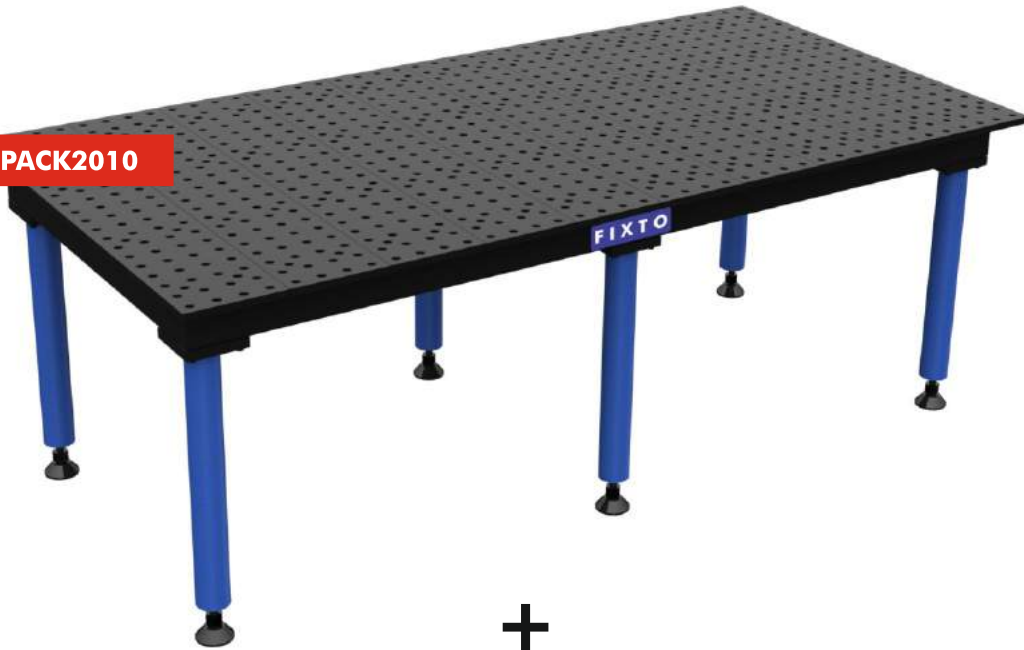


Video Guide

MODULAR WELDING TABLES WITH STANDARD CLAMPING SET

➤ **MODULAR WELDING TABLE - W 2000 x D 1000 X H 750**

WELDPACK2010



+

➤ **CLAMP SET B**



Model No.	Quantity
IC 200	8 Nos



Model No.	Quantity
DC 200	4 Nos



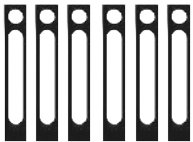
Model No.	Quantity
VB 120	4 Nos



Model No.	Quantity
BLB 27	24 Nos



Model No.	Quantity
BLB 24	8 Nos



Model No.	Quantity
SFS1590	6 Nos



Model No.	Quantity
PL 100	4 Nos



Model No.	Quantity
RAB 153	2 Nos



Model No.	Quantity
RAB721	6 Nos



Model No.	Quantity
RAB 725	4 Nos

+

➤ **FREE ACCESSORIES**



Allen Key Wrench



Brush



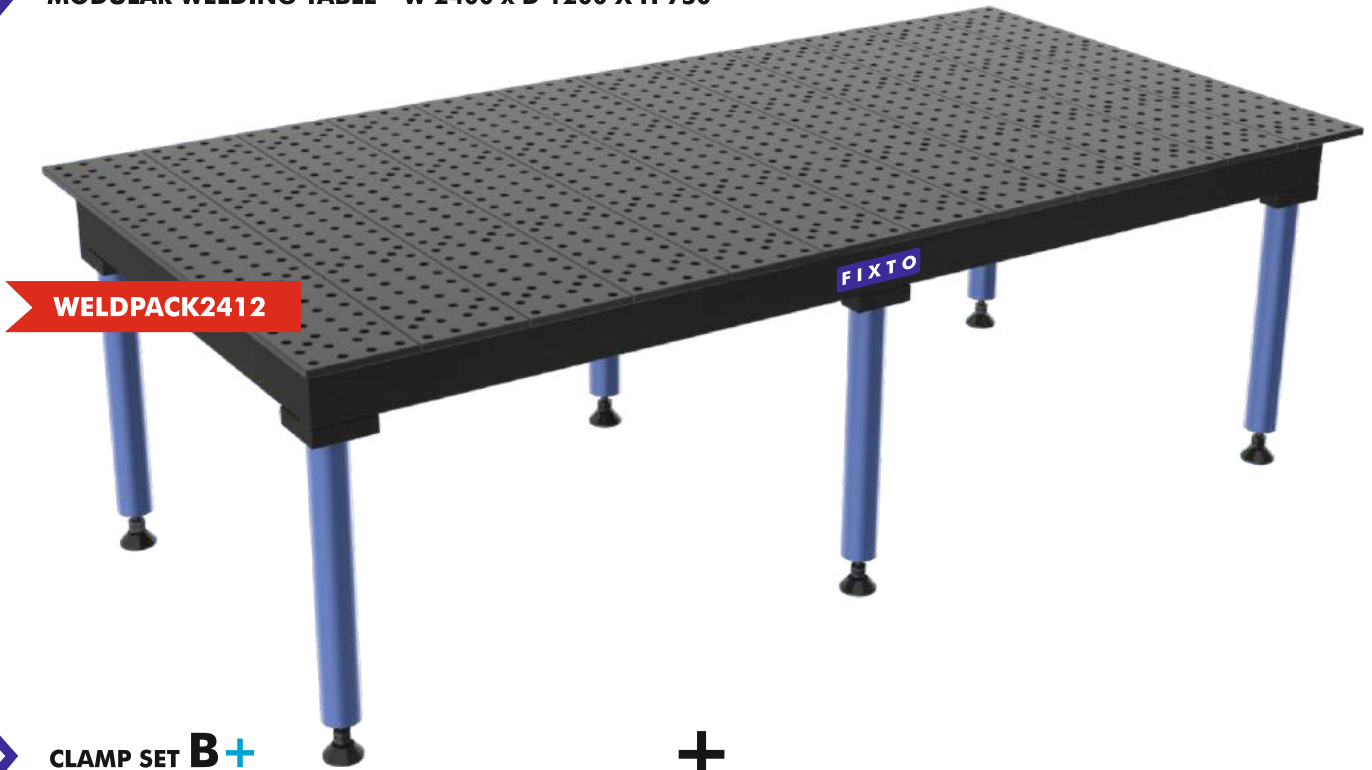
Instruction Manual



Video Guide

MODULAR WELDING TABLES WITH STANDARD CLAMPING SET

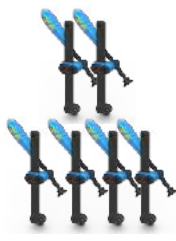
➤➤ **MODULAR WELDING TABLE - W 2400 x D 1200 X H 750**



➤➤ **CLAMP SET B+**



Model No.	Quantity
IC 200	10 Nos



Model No.	Quantity
DC 200	6 Nos



Model No.	Quantity
VB 120	4 Nos



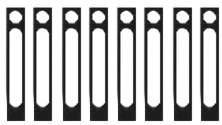
Model No.	Quantity
BLB 27	24 Nos



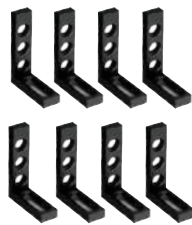
Model No.	Quantity
BLB 24	12 Nos



Model No.	Quantity
BLB AUTO	8 Nos



Model No.	Quantity
SFS1590	8 Nos



Model No.	Quantity
RAB721	8 Nos



Model No.	Quantity
RAB 153	2 Nos



Model No.	Quantity
RAB 725	4 Nos



Model No.	Quantity
BRAB 300	2 Nos



Model No.	Quantity
PL 100	4 Nos

➤➤ **FREE ACCESSORIES**



Allen Key Wrench



Brush



Instruction Manual



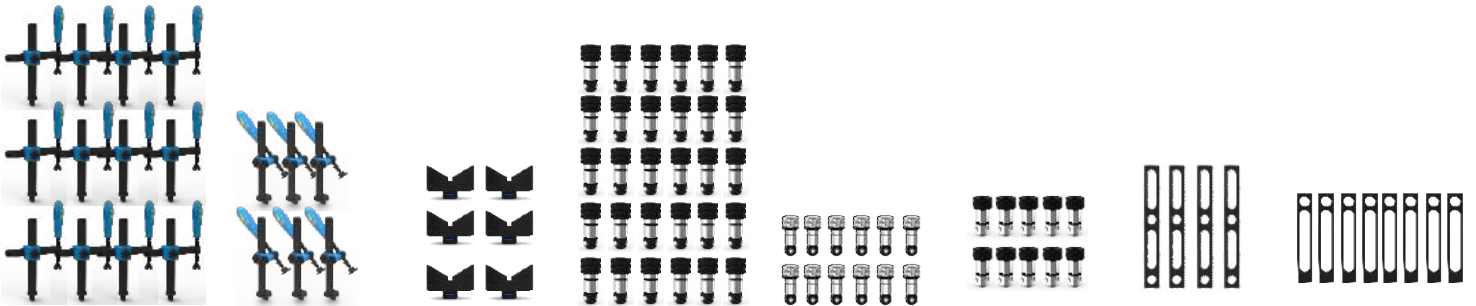
Video Guide

MODULAR WELDING TABLES WITH STANDARD CLAMPING SET

MODULAR WELDING TABLE - W 3000 x D 1500 X H 900



CLAMP SET C



Model No.	Quantity
IC 200	12 Nos

Model No.	Quantity
DC 200	6 Nos

Model No.	Quantity
VB 120	6 Nos

Model No.	Quantity
BLB 27	30 Nos

Model No.	Quantity
BLB 24	12 Nos

Model No.	Quantity
BLB AUTO	10 Nos

Model No.	Quantity
SFS 2050	4 Nos

Model No.	Quantity
SFS1590	8 Nos



Model No.	Quantity
RAB721	8 Nos



Model No.	Quantity
RAB 153	4 Nos



Model No.	Quantity
BRAB 300	2 Nos



Model No.	Quantity
SB 113	2 Nos



Model No.	Quantity
MAGPRO	2 Nos



Model No.	Quantity
PL 100	6 Nos



Model No.	Quantity
TRL 30	1 Nos



FREE ACCESSORIES



Allen Key Wrench



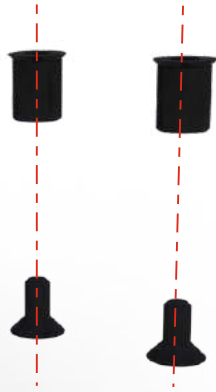
Brush



Instruction Manual



Video Guide

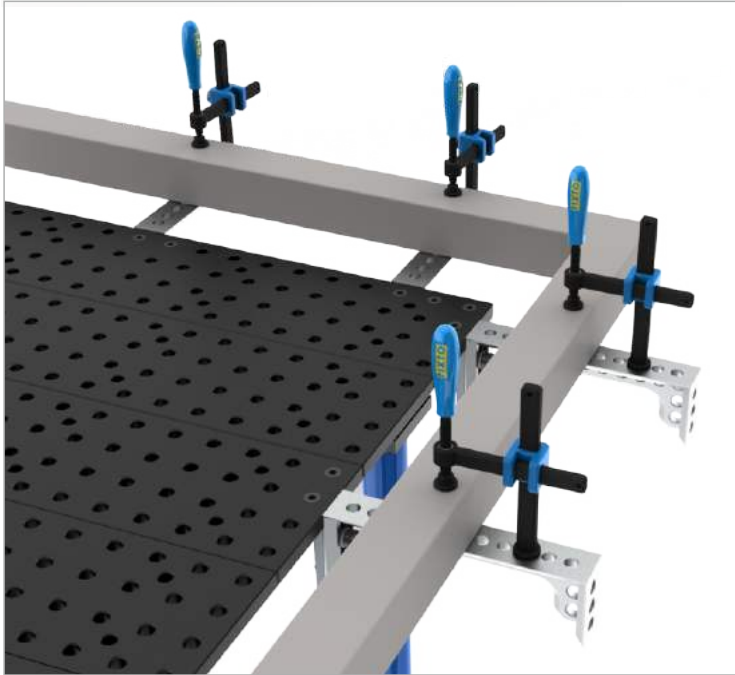


3D Brackets for Tables

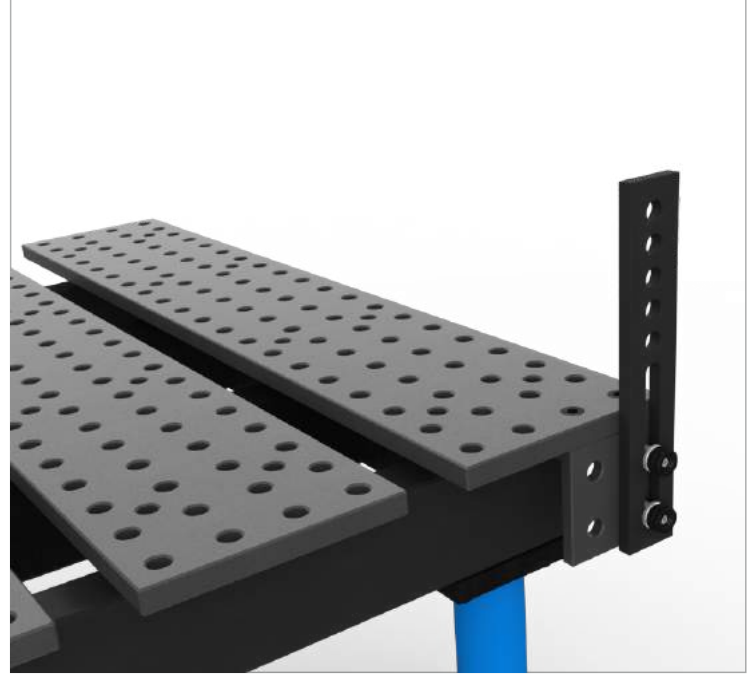
locate or clamp your weldment at or beyond the table edge, by mounting the 3D Bracket at the edge of your FIXTO Welding Table.

Use the 3D Bracket to vertically mount clamping elements, such as the Straight Flat Sops or Right Angle Brackets to add greater functionality to your table in fixturing oversized weldment.

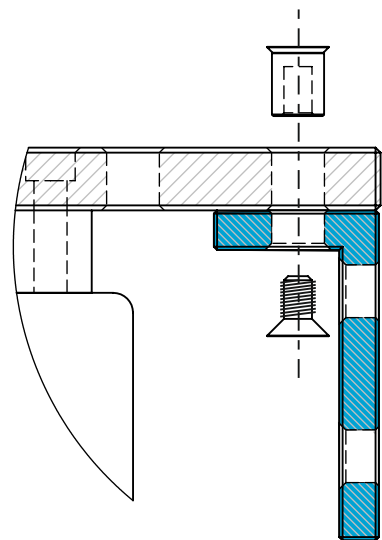
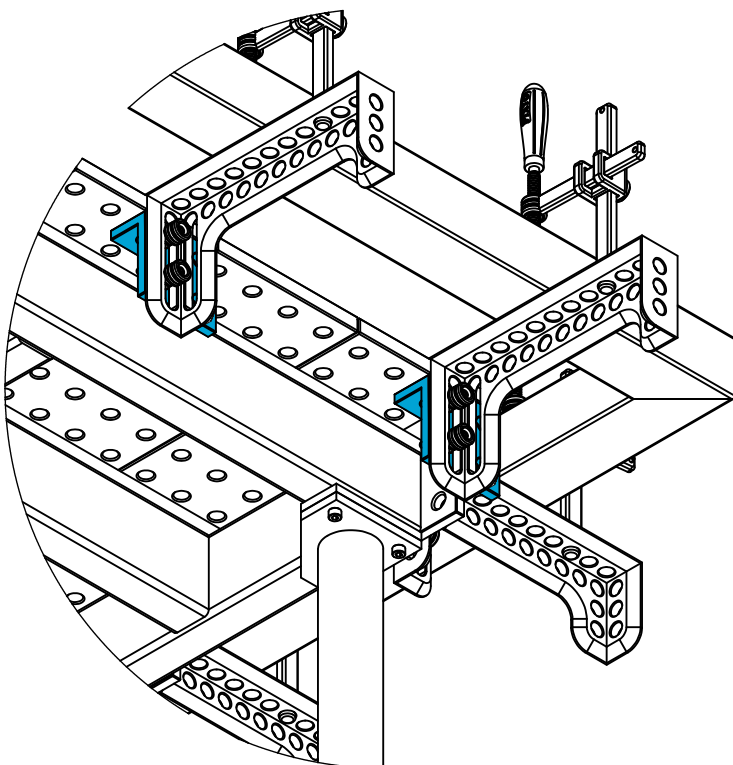
Part No.	Description	Hole Dimension
3DRAB	90° clamping	16mm



Extension for table with BRAB300



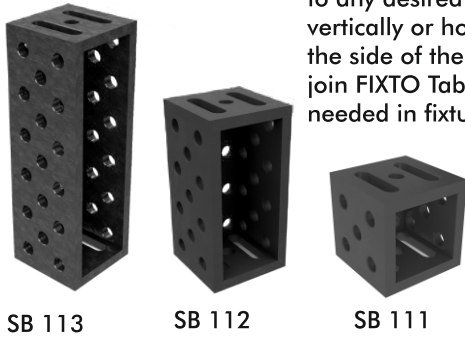
Side stopper application with SFS3100



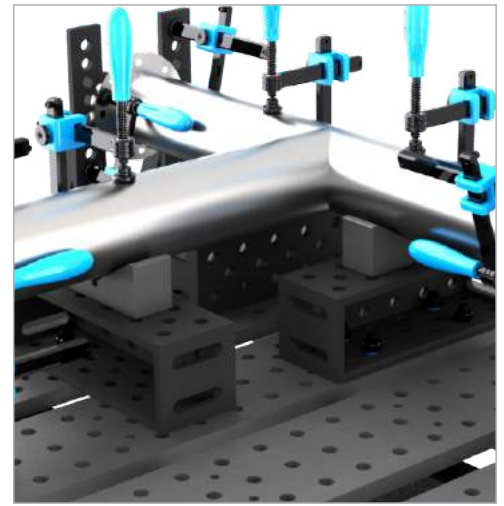
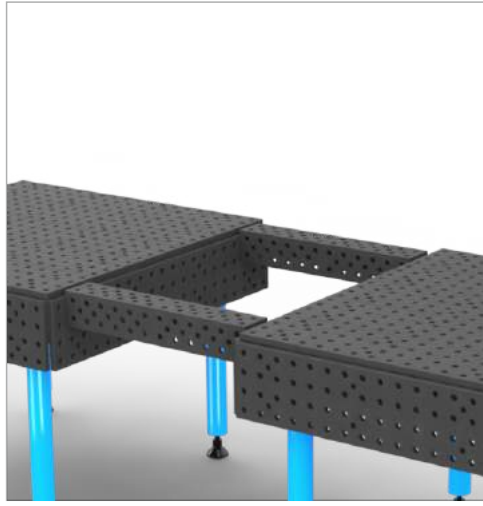
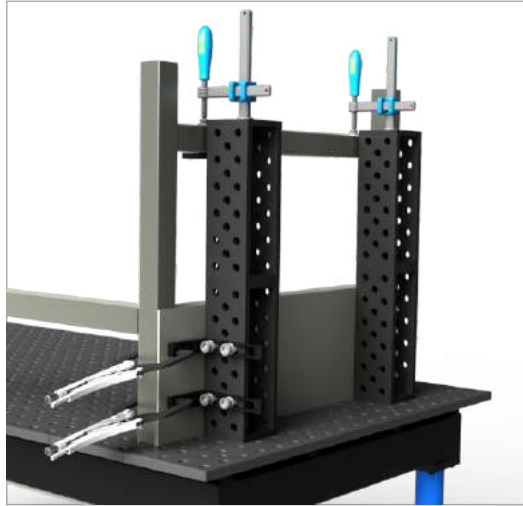
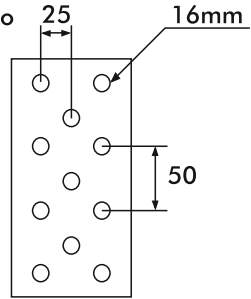
Fitting with FIXTO bolts

Square Blocks

These precision machined Square Blocks, with accurate bored holes, allow you to elevate a workpiece to any desired height. Increase the working height or width of the table by mounting the blocks vertically or horizontally. Cross-join the blocks for use as a beam. Mount a FIXTO plate to the side of the table, or use the blocks to mount FIXTO plates underneath the tabletop to join FIXTO Tables together. Also Square Blocks can be stacked to elevate workpieces as needed in fixturing.

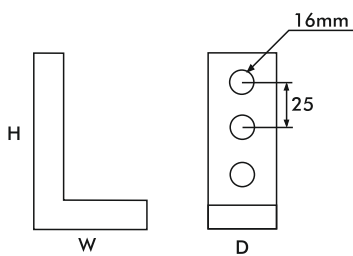


Model No.	Width	Depth	Height	Hole Dia
SB 111	100	100	100	16
SB 112	100	100	200	16
SB 113	100	100	300	16



Right Angle Bracket

These precision machined angles square hold materials at 90°. The holes and slots combination allow for infinite adjustments in fixturing. For heavy duty applications, choose the Riser Blocks on

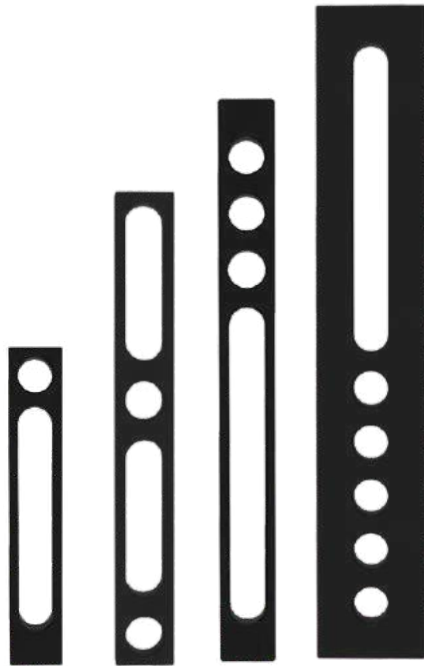


Model No.	Width	Depth	Height	Hole Dia
RAB725	75	25	50	16
RAB721	75	25	100	16
RAB121	150	25	100	16
RAB122	150	25	200	16
RAB153	150	50	300	16

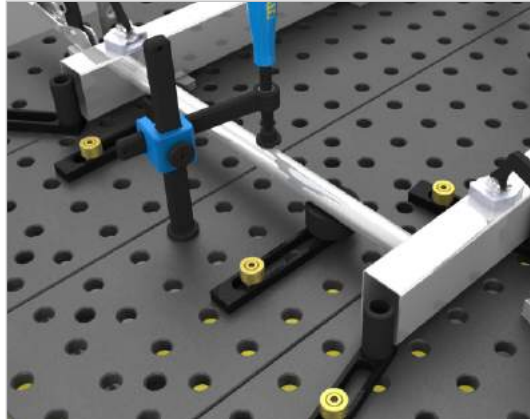
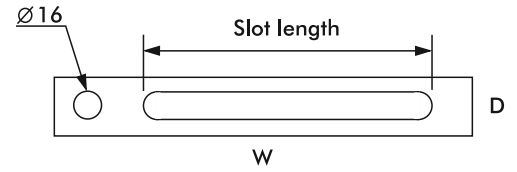


Straight Flat Stops

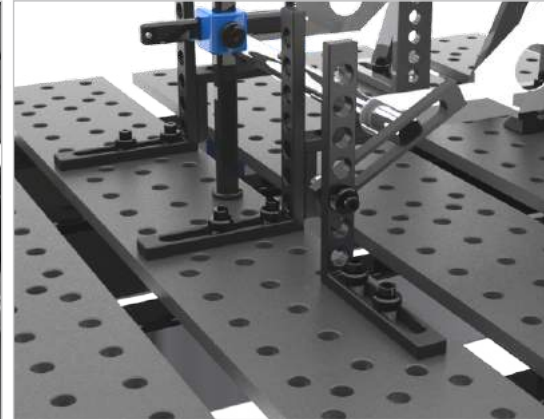
Long slots make these precision machined Straight Flat Stops infinitely adjustable in fixturing applications and squaring up parts.



SFS1590 SFS2050 SFS2512 SFS3100



Adjustable fixturing with V blocks



Can make any application with these Stops

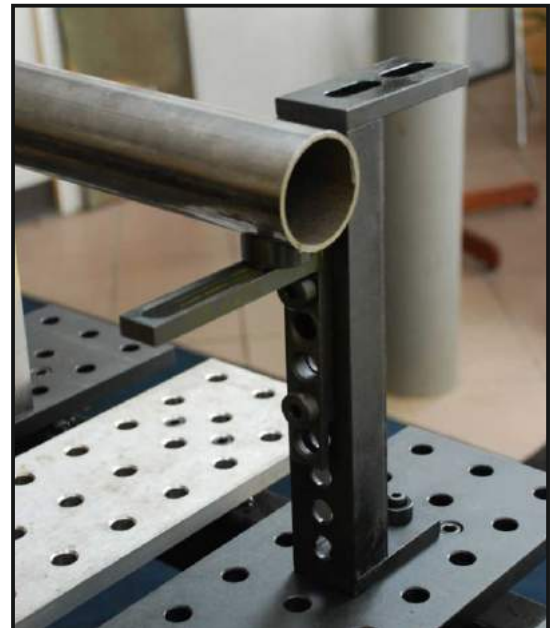
Model No.	Width	Depth	Slot Length
SFS1590	150	25	90
SFS2050	200	25	50
SFS2512	250	25	125
SFS3100	300	50	100

Clamping Square

Three sided Stops and Clamping Squares feature fully machined square surfaces for a variety of fit-up applications..



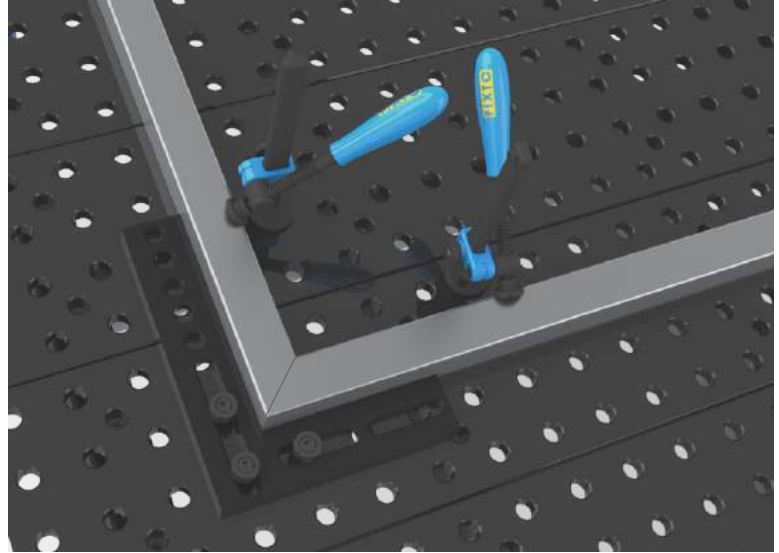
CS 101015 CS 201015 CS 301520



Model No.	Width	Depth	Height	Slot Length
CS 101015	150	75	100	100
CS 201015	150	75	200	150
CS 301520	150	75	300	150

FIXTO Flat Angle 250

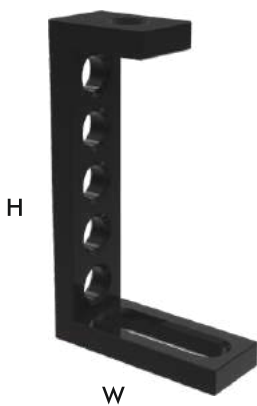
FIXTO Flat Angle, fixed or variably adjustable due to the combination of system bore holes and the oblong slot. The FLAT Angle can be used left or right hand



Model No.	W	H	Thk
FL 250	200	250	12

Stop & Clamping Angle**FIXTO Stop & Clamping Angle**

FIXTO Stop and Clamping Angle is adjustable Right Angle for a multitude of applications, due to the combination of system bore holes and oblong slot. The additional head plate enables further combinations options with other right angles or pressing of job with insert clamp from top

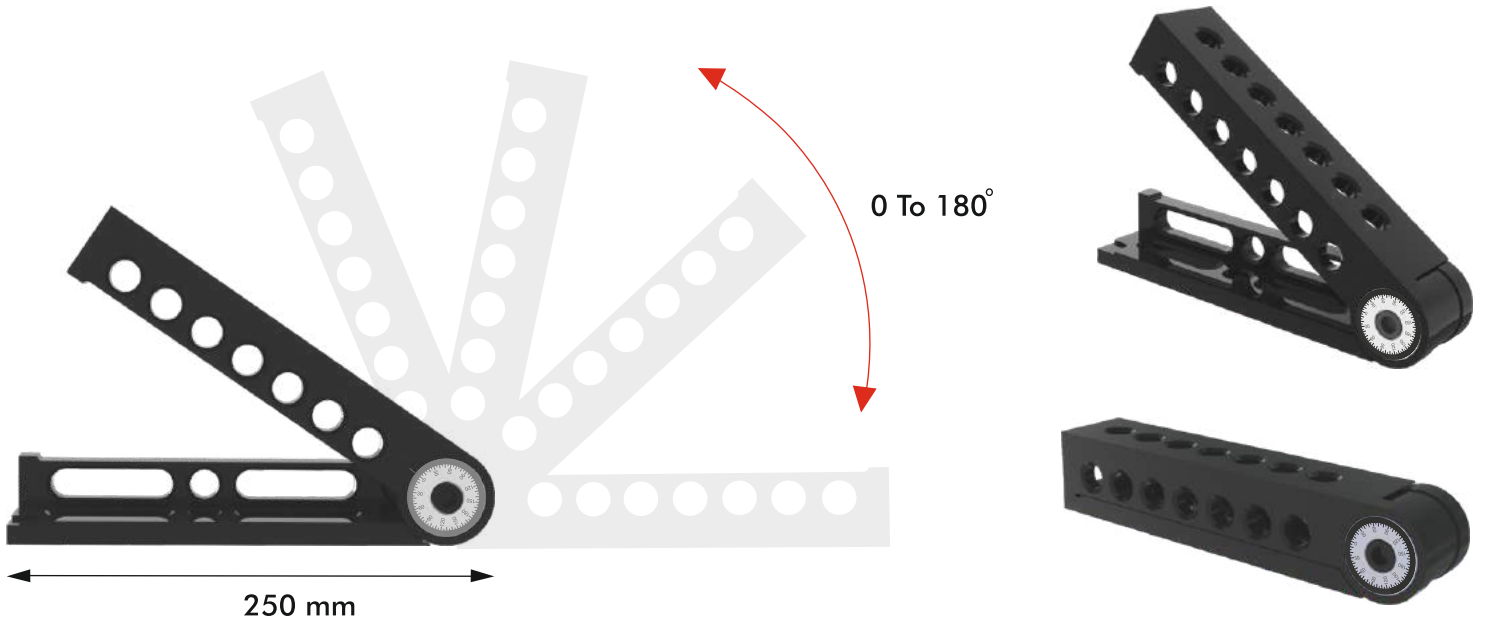


Model No.	W	H	Thk
SC 150	90	150	12

FIXTO Universal Angular Locator



FIXTO Universal Angular Locator clamping , ideal for angle application with high repeat accuracy. Any Individual angular degree between 0 and 180 can be set. The angular degree gauge ensures precise setting.



Ball Lock Bolts

Ball Lock Bolts are a time-saving, efficient, and handy method of fastening fixture elements to the FIXTO Tabletop, especially in tight spaces and hard-to-reach areas of the tabletop. The quick-setting Ball Lock Bolts provide accurate locating and clamping at the same time.



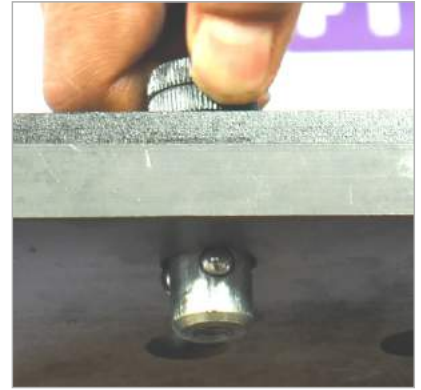
BLB24



BLB27



BLBAUTO can lock clamp to clamp and also plate to clamp



Application of locking balls with plate



BLB-AUTO

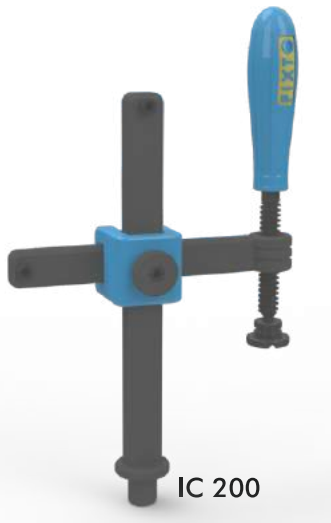


BLB-FLUSH

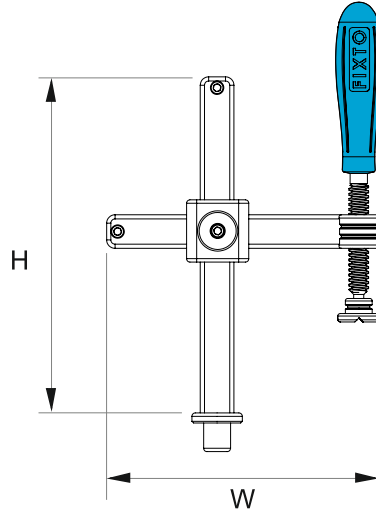
Model No.	Type	Description	Dia	Length
BLB24	Fixed	For connecting two accessories together	16	24
BLB27	Fixed	For connecting plate & accessories together	16	27
BLB-AUTO	Adjustable	Adjustable range for plates and accessories	16	22-37
BLB-FLUSH	Fixed	For connecting plate & accessories together	16	27

Insert Clamps

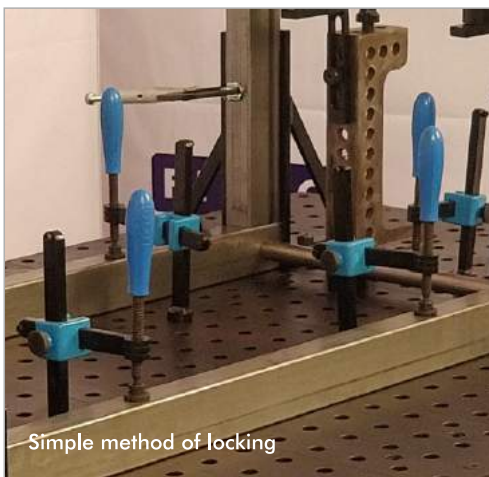
These clamps are designed to fit into the FIXTO table holes and all clamping holes for fast and easy clamping.



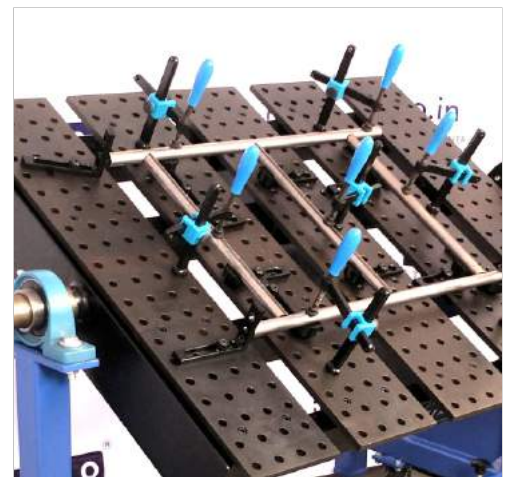
IC 200

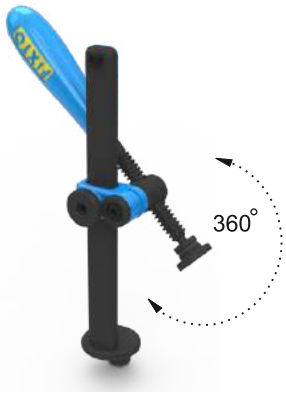
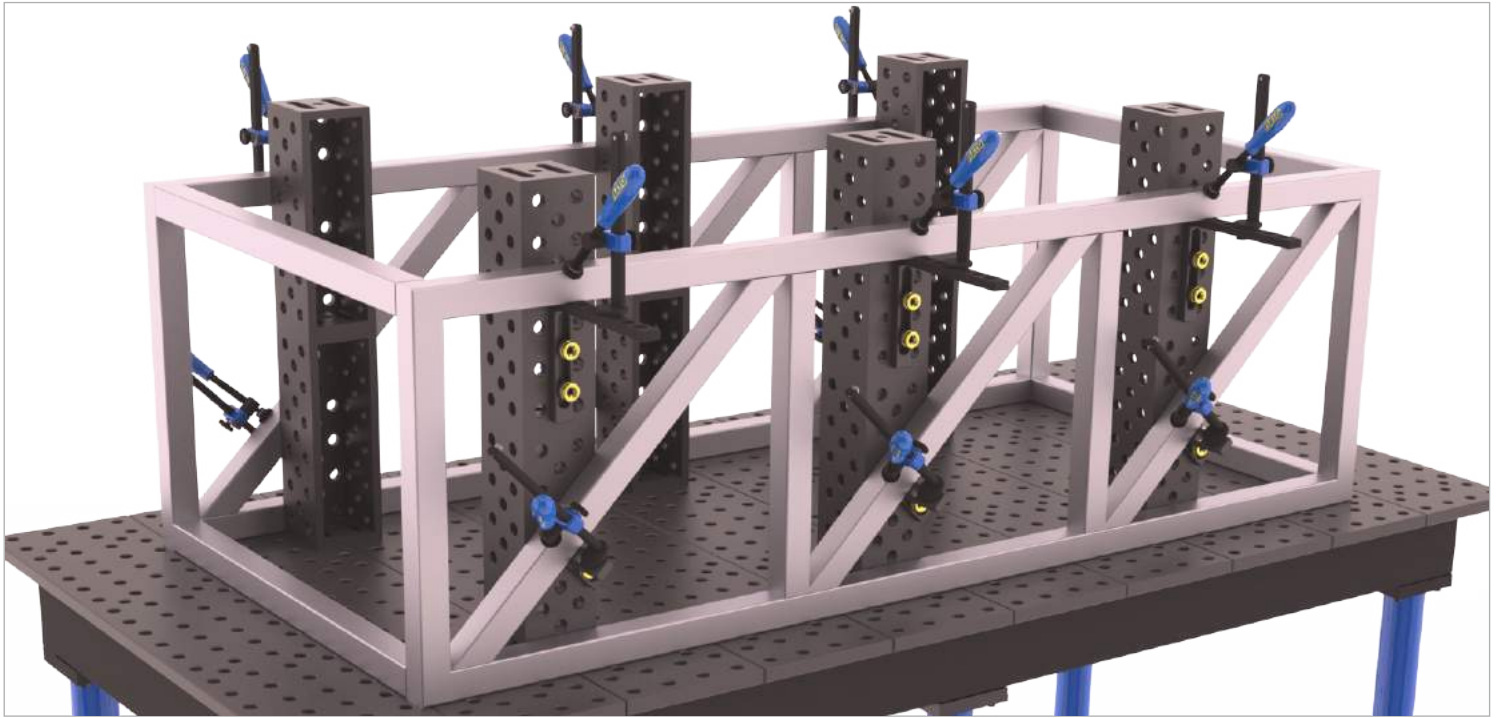


Model No.	W	H	Fitting Dia
IC-200	150	200	16
IC-300	200	300	16
IC-400	250	400	16



Simple method of locking



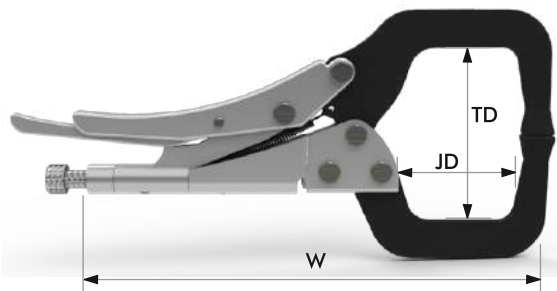


Model No.	W	H	Fitting Dia
DC-200	150	200	16

Versatile clamping systems ensure a clamp for your every need. All clamps easily set with one hand and feature interchangeable pads for work with sensitive materials.



Jaw Pliers

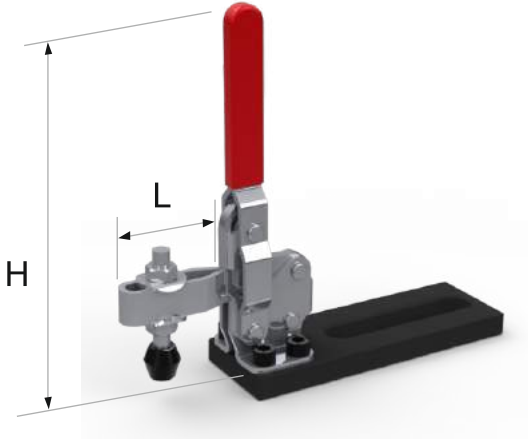


This Clamp features wide arms that reach over or around most obstructions. These plier can easily clamp flat surfaces.

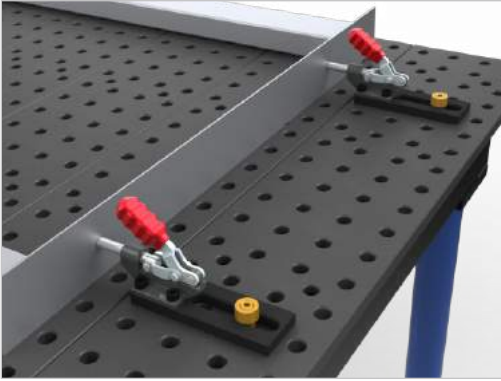
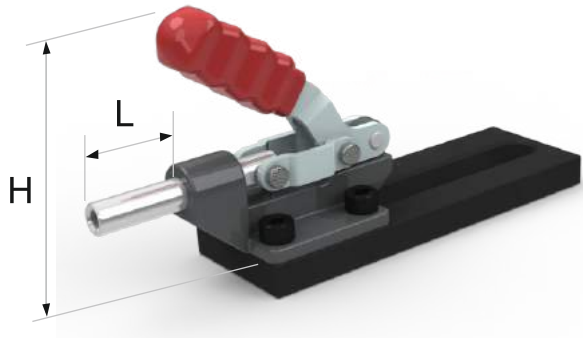
Model No.	Width	Throat Depth	Jaw Depth
PL-100	257	68	100
PL-200	387	200	100



These Toggle Clamps directly mount on FIXTO Tables, Square Blocks, all types of right angles, clamping squares & Malleable right angles

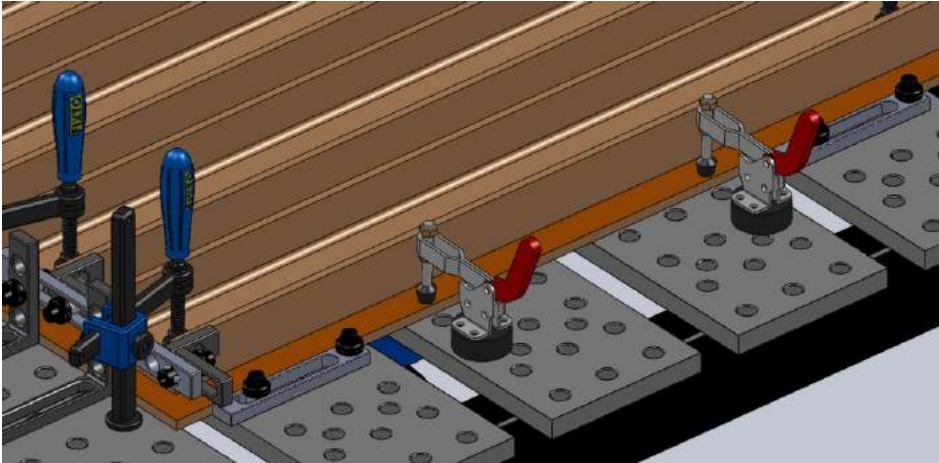


Can Mount on All Right Angle Brackets



Mount directly on FIXTO Tables

Model No.	Description	L	H
VTC-150	Vertical Action	54.5	174
VTC-250	Vertical Action	91	195
HTC-100	Horizontal Action	85.5	25
HTC-150	Horizontal Action	121	32

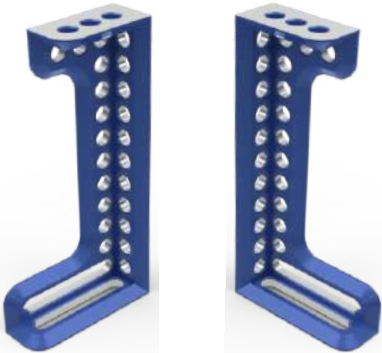


Mount directly on FIXTO Tables



Malleable Right Angle

Versatile four side Clamping Right Angles.
26 Holes and 2 Slots on each.
CNC machined faces.



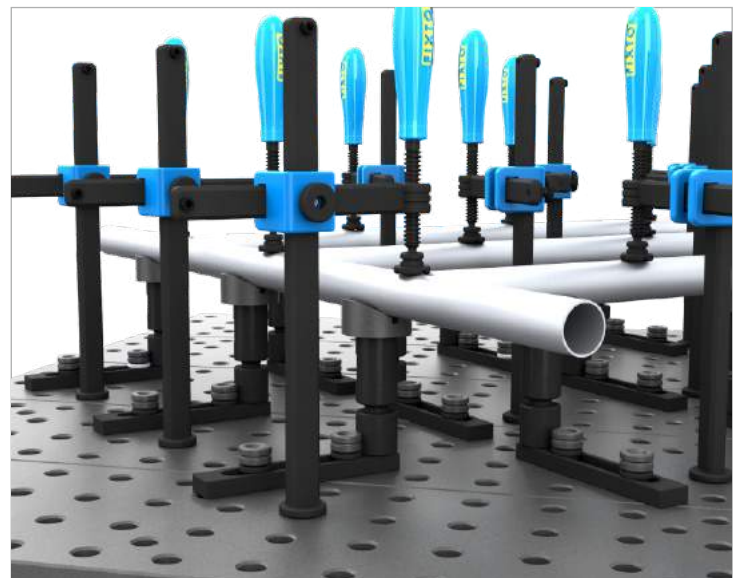
BRAB300R

BRAB300L

Model No.	Description	Dimension (mm)
BRAB300R	Right Face Angle	50 x 150 x 300
BRAB300L	Left Face Angle	50 x 150 x 300

Height Adjustable Spacer

Adjustable Spacer is operated manually by hand adjustment, with a turn of the easy grip knurled band for complete control in precise , minute height adjustment.

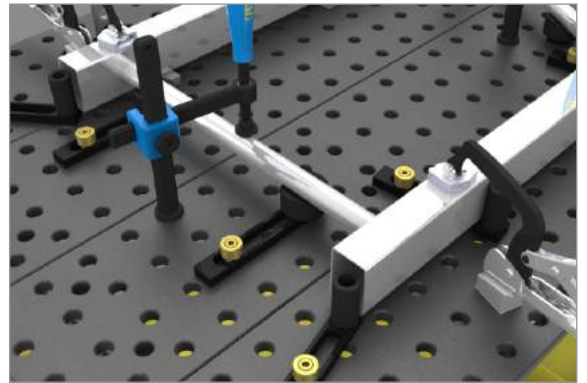


Model No.	Adjustment	Locating Post Dia
ASP40	70 - 90	16

The Locator features 16 mm bored hole V- Blocks and Adjustable Spacers insert into any fixturing hole on the FIXTO Table for use as a support or rest for aligning object.



Model No.	Diameter (mm)	Locating Post Dia
LC-50	25	16

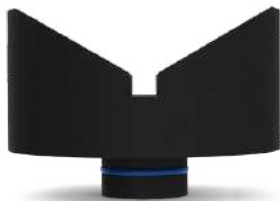


V- Block

V Blocks are designed to hold round parts. they fit into the holes of FIXTO Tables, Square blocks and all Right Angles



VB-90



VB-120



VB-135



Model No.	Diameter (mm)	Max Tube Size	Locating Post Dia
VB-90	50	50	16
VB-120	50	60	16
VB-135	65	75	16

Magnet Square

The fast & easy way to hold metal workpieces at 45°, and 90°.

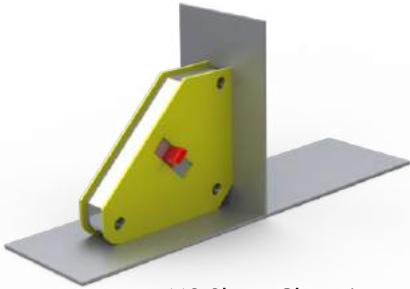
Turn the magnet Off or at the mid-point position when setting up, turn On when you're ready to work. Fast and safe set-up!

Ideal for round and square tubing, angle, and flat stock.

Easy to clean. Simply turn Off and wipe.



Model No.	MAX Pull Force	Max round tube	Angle Lock
MAGPRO	40kg	32	90 & 45



MS Sheet Clamping



Round Pipe Clamping



Square Pipe Clamping

Magnet Bolt

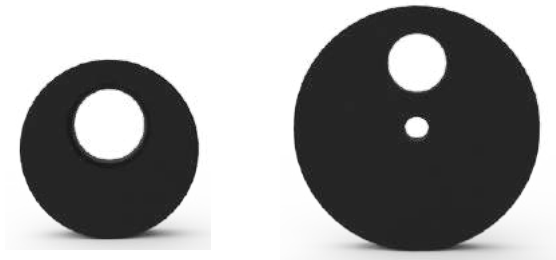
Set of four Magnet Bolt can be used on any flat surface, instead into the holes on FIXTO Table or any Right Angles

Model No.	Set Qty.	Dimension (mm)	Insert Dia
MAGBOLT	4	42 x 25	16



Off- Center Pad

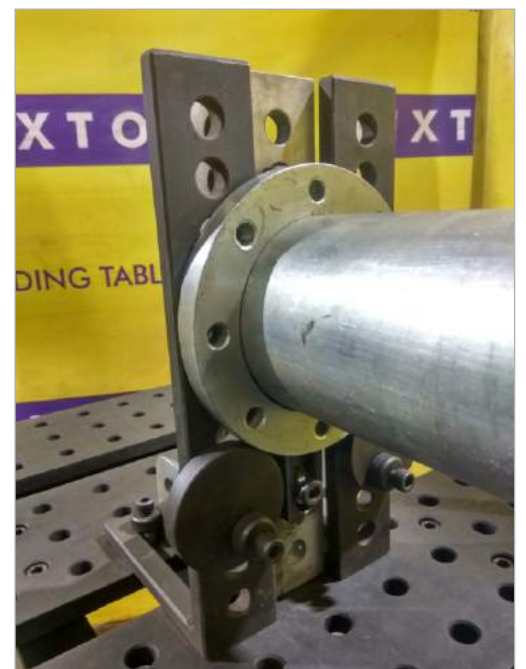
Off-Centre Pad provide a quick way to position the edge of the workpiece to a locating stop. The 360° rotation allows infinite adjustments.



OCP38

OCP63

Model No.	Diameter	Adjust Range	Offset
OCP38	38	0-43mm	5mm
OCP63	63.5	0-82.5mm	17.5mm

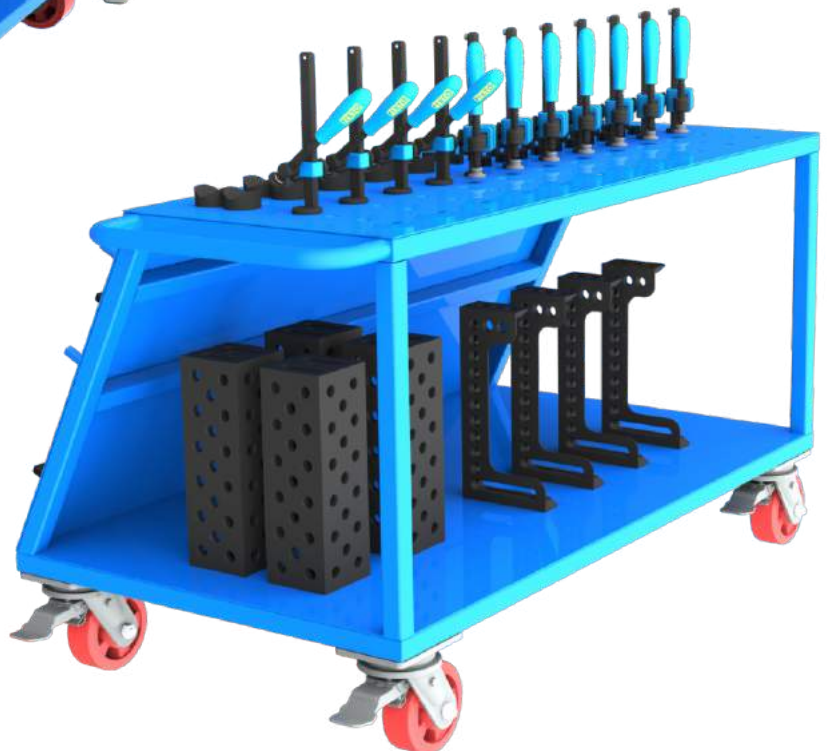
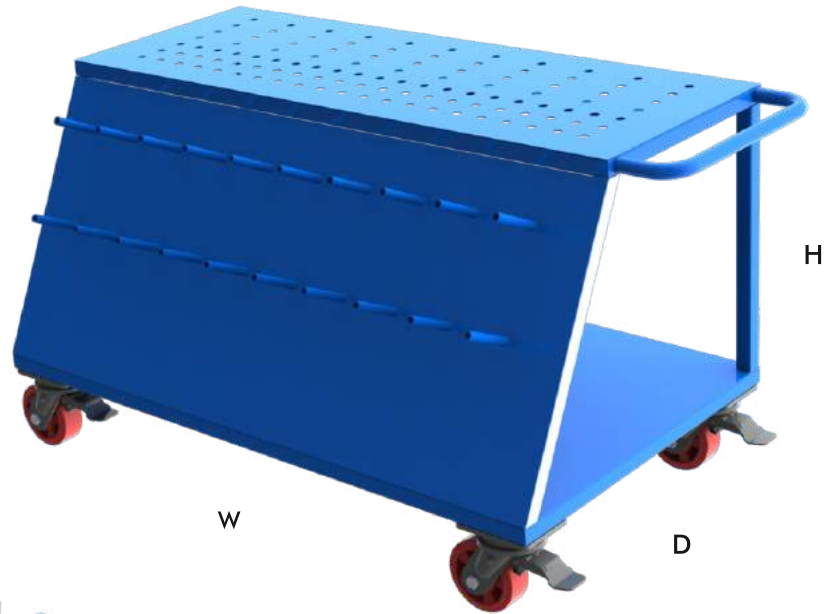


FIXTO Tools Storage Trolley



FIXTO Tools Storage Trolley offers sufficient space for your FIXTO accessories, your tools are handy, and you always keep track of them, Big Right Angels are practically and safely stored in the inside space. Due to the casters tools are quickly transported to different points of use.

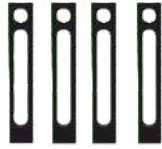
Model No.	W	D	H
TRL30	1200	680	700



Set Of 28 Clamps



Model No.	Quantity
IC 200	4 Nos



Model No.	Quantity
SFS1590	4 Nos



Model No.	Quantity
RAB725	4 Nos



Model No.	Quantity
RAB721	4 Nos



Model No.	Quantity
BLB27	12 Nos

Clamping Set A+

Set Of 46 Clamps



Model No.	Quantity
IC 200	6 Nos



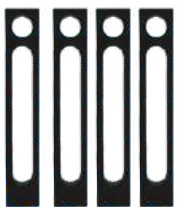
Model No.	Quantity
DC 200	2 Nos



Model No.	Quantity
VB 120	4 Nos



Model No.	Quantity
BLB27	18 Nos



Model No.	Quantity
SFS1590	4 Nos



Model No.	Quantity
PL 100	2 Nos



Model No.	Quantity
RAB153	2 Nos



Model No.	Quantity
RAB 721	4 Nos



Model No.	Quantity
RAB725	4 Nos

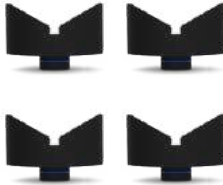
Set Of 70 Clamps



Model No.	Quantity
IC 200	8 Nos



Model No.	Quantity
DC 200	4 Nos



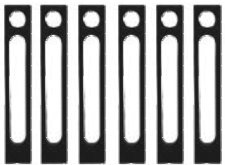
Model No.	Quantity
VB 120	4 Nos



Model No.	Quantity
BLB 27	24 Nos



Model No.	Quantity
BLB 24	8 Nos



Model No.	Quantity
SFS1590	6 Nos



Model No.	Quantity
PL 100	4 Nos



Model No.	Quantity
RAB 153	2 Nos



Model No.	Quantity
RAB721	6 Nos

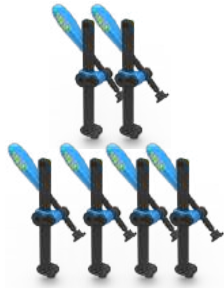


Model No.	Quantity
RAB 725	4 Nos

Set Of 92 Clamps



Model No.	Quantity
IC 200	10 Nos



Model No.	Quantity
DC 200	6 Nos



Model No.	Quantity
VB 120	4 Nos



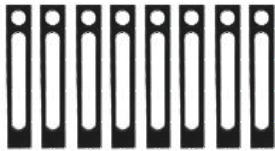
Model No.	Quantity
BLB 27	24 Nos



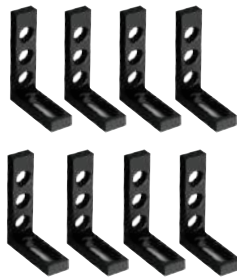
Model No.	Quantity
BLB 24	12 Nos



Model No.	Quantity
BLB AUTO	8 Nos



Model No.	Quantity
SFS1590	8 Nos



Model No.	Quantity
RAB721	8 Nos



Model No.	Quantity
RAB 153	2 Nos



Model No.	Quantity
RAB 725	4 Nos



Model No.	Quantity
BRAB 300	2 Nos



Model No.	Quantity
PL 100	4 Nos

Set Of 113 Clamps



Model No.	Quantity
IC 200	12 Nos



Model No.	Quantity
DC 200	6 Nos



Model No.	Quantity
VB 120	6 Nos



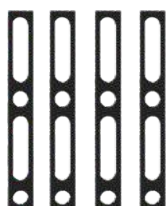
Model No.	Quantity
BLB 27	30 Nos



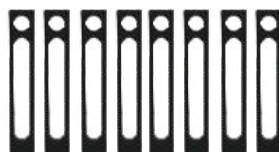
Model No.	Quantity
BLB 24	12 Nos



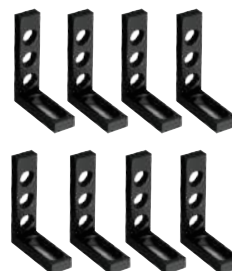
Model No.	Quantity
BLB AUTO	10 Nos



Model No.	Quantity
SFS 2050	4 Nos



Model No.	Quantity
SFS1590	8 Nos



Model No.	Quantity
RAB721	8 Nos



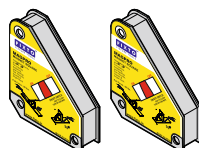
Model No.	Quantity
RAB 153	4 Nos



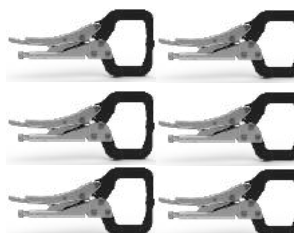
Model No.	Quantity
BRAB 300	2 Nos



Model No.	Quantity
SB 113	2 Nos



Model No.	Quantity
MAGPRO	2 Nos



Model No.	Quantity
PL 100	6 Nos



Model No.	Quantity
TRL 30	1 Nos

Clamping Set C+

Set Of 156 Clamps



Model No.	Quantity
IC 200	15 Nos



Model No.	Quantity
DC 200	8 Nos



Model No.	Quantity
VB 120	8 Nos



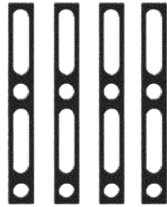
Model No.	Quantity
BLB 27	36 Nos



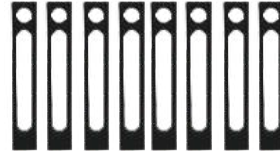
Model No.	Quantity
BLB 24	18 Nos



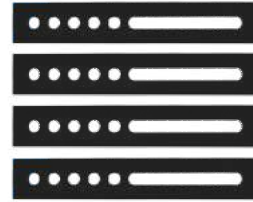
Model No.	Quantity
BLB AUTO	12 Nos



Model No.	Quantity
SFS 2050	4 Nos



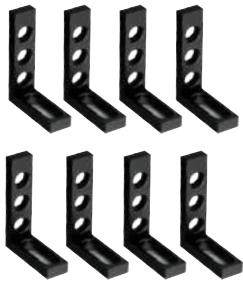
Model No.	Quantity
SFS1590	8 Nos



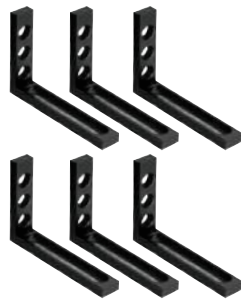
Model No.	Quantity
SFS 3100	4 Nos



Model No.	Quantity
RAB 725	4 Nos



Model No.	Quantity
RAB721	8 Nos



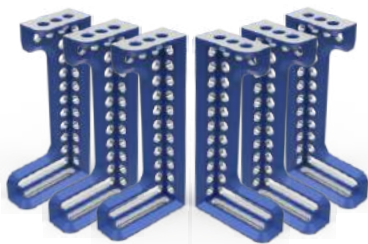
Model No.	Quantity
RAB 121	6 Nos



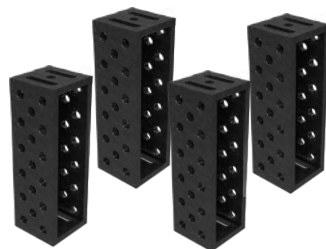
Model No.	Quantity
RAB 153	4 Nos



Model No.	Quantity
PL 100	6 Nos



Model No.	Quantity
BRAB 300	6 Nos



Model No.	Quantity
SB 113	4 Nos



Model No.	Quantity
MAGPRO	4 Nos



Model No.	Quantity
TRL 30	1 Nos

FIXTO[®]

D28 SERIES



3D

100 x 100mm Grid with Nitrided Surface

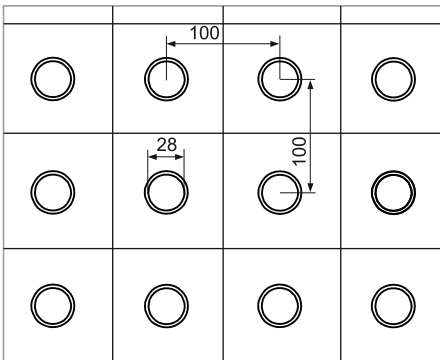


Table top specification



3D option for side clamping (200 mm)

Model No.	Finish	Width	Depth	Height	Loading Capacity
RCG-3015	Non Nitrided	3000	1500	900/750	3000 kg
RCG-2412		2400	1200		2000 kg
RCG-1515		1500	1500		1000 kg
RCG-1510		1500	1000		1000 kg
RCG-1212		1200	1200		800 kg
NCG-3015	Nitrided	3000	1500	900/750	3000 kg
NCG-2412		2400	1200		2000 kg
NCG-1515		1500	1500		1000 kg
NCG-1510		1500	1000		1000 kg
NCG-1212		1200	1200		800 kg

2D

100 x 100mm Grid with Nitrided Surface

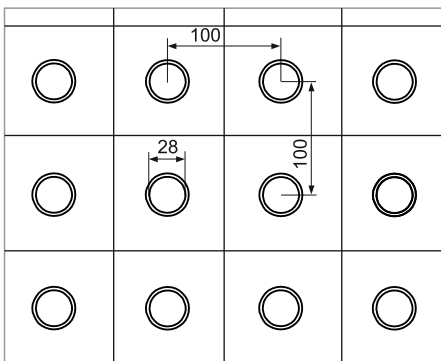
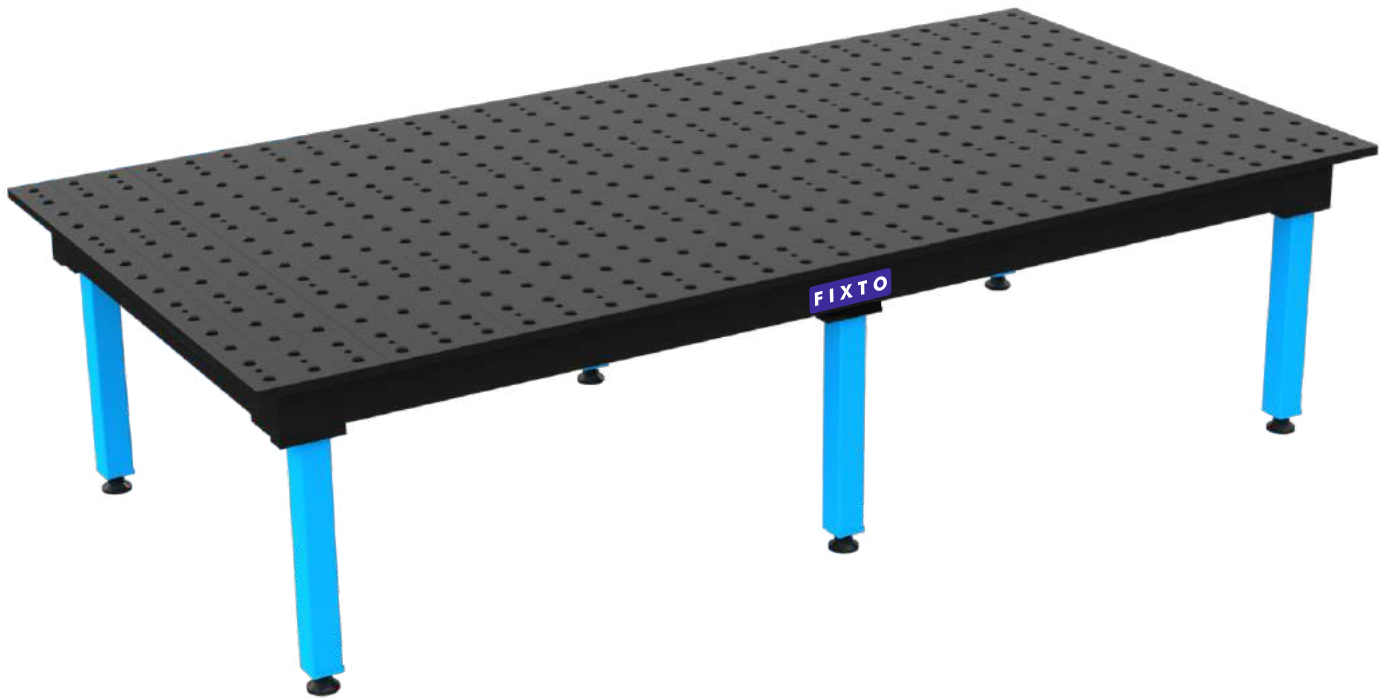
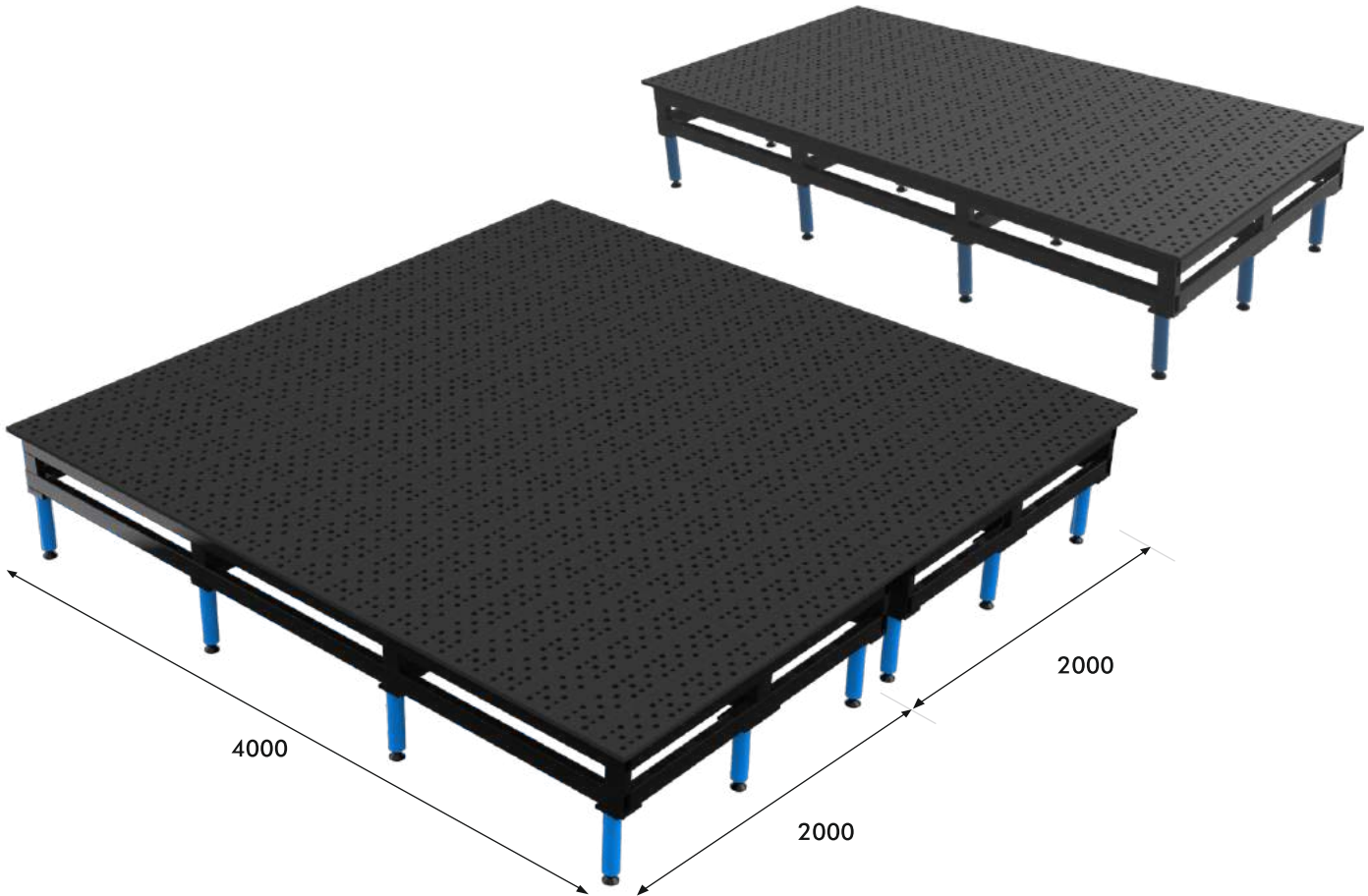


Table top specification

Model No.	Finish	Width	Depth	Height	Loading Capacity
RPG-3015	Non Nitrided	3000	1500	900/750	3000 kg
RPG-2412		2400	1200		2000 kg
RPG-1515		1500	1500		1000 kg
RPG-1510		1500	1000		1000 kg
RPG-1212		1200	1200		800 kg
NPG-3015	Nitrided	3000	1500	900/750	3000 kg
NPG-2412		2400	1200		2000 kg
NPG-1515		1500	1500		1000 kg
NPG-1510		1500	1000		1000 kg
NPG-1212		1200	1200		800 kg

The New FIXTO Giant table has a continuous plate tabletop surface with 33% more machined holes than the standard, slotted FIXTO Tables, for a maximized work surface.

Use the FIXTO Giant table to Set-up heavy duty, large, or complex fixtures, or set-up more than one fixture at a time. Utilize the additional holes for clamping at multiple points for greater fixturing accuracy.



Model No.	Finish	Width	Depth	Height	Loading Capacity
RCZ-4020	Non Nitrided	4000	2000	900/750	7000 Kg
RCZ-3020		3000			
RCZ-2020		2000			
NCZ-4020	Nitrided	4000			
NCZ-3020		3000			
NCZ-2020		2000			



3D option for side clamping

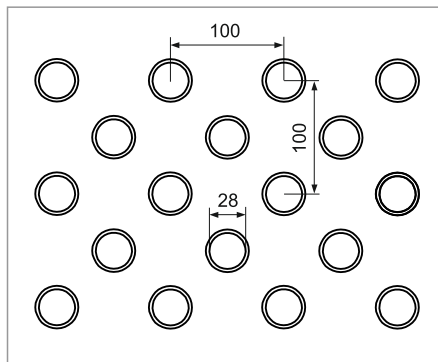
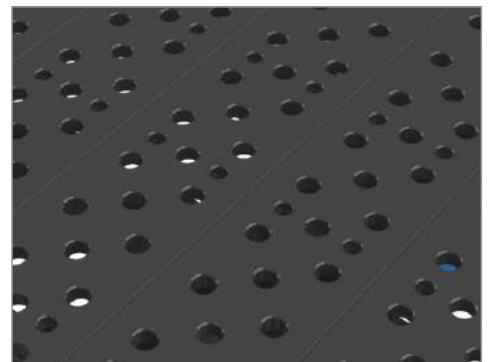


Table top specification



Continuous-plate tabletop surface with 33% more CNC machined holes.



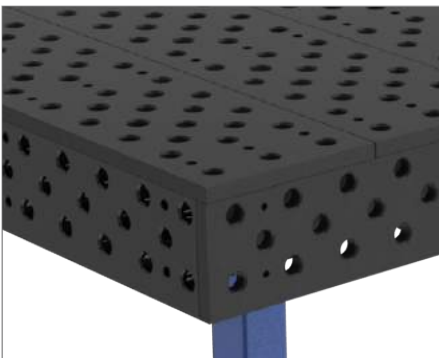
Legs Options



Legs + Castor wheel with Breaking System

Legs + Leveling Pad

Model No.	Finish	Width	Depth	Height	Loading Capacity
RCX-3015	Non Nitrided	3000	1500	900/750	3000 kg
RCX-2412		2400	1200		2000 kg
RCX-1515		1500	1500		1000 kg
RCX-1510		1500	1000		1000 kg
RCX-1212		1200	1200		800 kg
NCX-3015	Nitrided	3000	1500	900/750	3000 kg
NCX-2412		2400	1200		2000 kg
NCX-1515		1500	1500		1000 kg
NCX-1510		1500	1000		1000 kg
NCX-1212		1200	1200		800 kg



3D option for side clamping (200 mm)

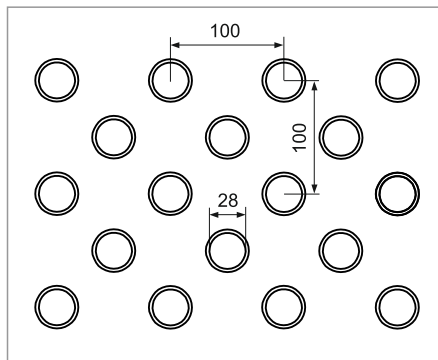


Table top specificaion



Continuous-plate tabletop surface with 33% more CNC machined holes.

Nitrided (Heat-Treated) Tabletop

The nitriding (heat-treating) process is a mechanical polish and post saltbath oxidative treatment. The benefits of this process include: Anti-Spatter, Corrosion Protection, and resistance to wear, lubricity and fatigue strength.



Model No.	Finish	Width	Depth	Height	Loading Capacity
RCZ-3015	Non Nitrided	3000	1500	900/750	3000 kg
RCZ-2412		2400	1200		2000 kg
RCZ-2010		2000	1000		1800 kg
RCZ-1510		1500	1000		1000 kg
RCZ-1212		1200	1200		1000 kg
RCZ-1010		1000	1000		800 kg
NCZ-3015	Nitrided	3000	1500	900/750	3000 kg
NCZ-2412		2400	1200		2000 kg
NCZ-2010		2000	1000		1800 kg
NCZ-1510		1500	1000		1000 kg
NCZ-1212		1200	1200		1000 kg
NCZ-1010		1000	1000		800 kg

Legs Options



Legs + Leveling Pad



Legs + Castor wheel with Breaking System

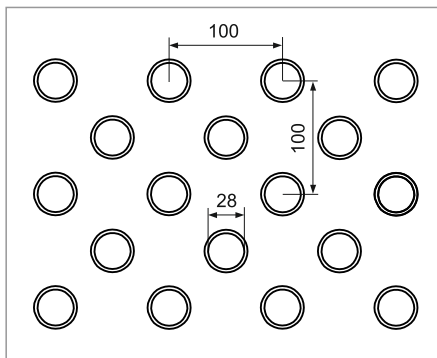
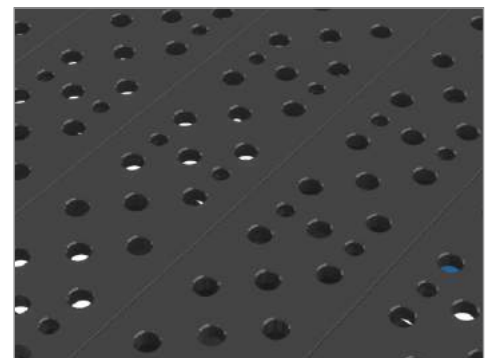


Table top specification



Continuous-plate tabletop surface with 33% more CNC machined holes.



Model No.	Finish	Width	Depth	Height	Loading Capacity
RCT-500	Non Nitrided	2950	1500	900/750	2500 kg
RCT-400		2450	1200		2000 kg
RCT-300		1950	1000		1800 kg
RCT-200		1200	1200		1000 kg
RCT-100		950	1000		800 kg
NCT-500	Nitrided	3000	1500		2500 kg
NCT-400		2450	1200		2000 kg
NCT-300		1950	1000		1800 kg
NCT-200		1200	1200		1000 kg
NCT-100		950	1000		800 kg

Legs Options



Legs + Leveling Pad



Legs + Castor wheel with Breaking System

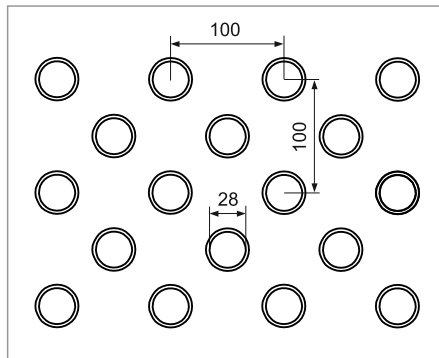
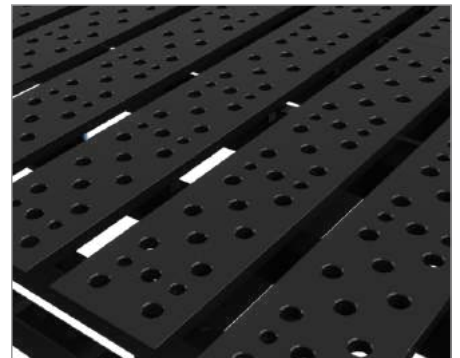


Table top specification



50 mm gap between 2 top plates provides channels for standard clamps and components.

Universal Stops

Universal Stop are fixed or variable adjustable, due to the combination of oblong slot and system clamping holes. It is also appropriate for use with V Blocks.

US 800 / US 1000



Universal Stop 800/1000

10 System Clamping Holes

Length	Width	Thick
800 mm	75 mm	25 mm
1000 mm	100 mm	25 mm

US 500



Universal Stop 500

7 System Clamping Holes

Length	Width	Thick
500 mm	75 mm	25 mm

US 300



Universal Stop 300

3 System Clamping Holes

Length	Width	Thick
300 mm	50 mm	25 mm

US 225



Universal Stop 225

1 System Clamping Holes

Length	Width	Thick
225 mm	50 mm	25 mm

US 150



Universal Stop 150

1 System Clamping Slot

Length	Width	Thick
150 mm	50 mm	25 mm

RAB 175SL



Right Angle Bracket 175SL

Length	Width	Height	Thick
175 mm	50 mm	175 mm	25 mm

RAB 175HL



Right Angle Bracket 175HL

Length	Width	Height	Thick
175 mm	50 mm	175 mm	25 mm

RAB 175L



Right Angle Bracket 175L

Length	Width	Height	Thick
175 mm	50 mm	175 mm	25 mm

RAB 275L



Right Angle Bracket 275L

Length	Width	Height	Thick
275 mm	50 mm	175 mm	25 mm

RAB 200L



Right Angle Bracket 200L

Length	Width	Height	Thick
175 mm	50 mm	200 mm	25 mm

Flat Squares

Flat squares are fixed or variable adjustable, due to the combination of oblong slot and system clamping holes. The Flat Square is freely adjustable over a length of up to 100 mm.

FS 500



Flat Square 500

5 System Clamping Holes

Length	Width	Thick
500 mm	375 mm	25 mm

FS 175



Flat Square 175

3 System Clamping Holes

Length	Width	Thick
175 mm	175 mm	25 mm

Right Angle Brackets

Right Angle Brackets can be used as a stop or combined with other elements to form more complex fixtures. Oblong slots enable a range of adjustable options.

RAB 50



Right Angle Bracket 50

Length	Width	Height	Thick
75 mm	50 mm	75 mm	25 mm

RAB 175



Right Angle Bracket 175

Length	Width	Height	Thick
175 mm	50 mm	75 mm	25 mm

Clamping And Locating Angles

Clamping And Locating Angles are even more versatile than normal squares due to the presence of work holes on three sides. Their large size and robust construction enables them to act as a stop for large parts and bear heavy loads when used as a table extension.

CLA 800 L/R



Clamping And Locating Angle 800 L/R

Length	Width	Height	Thick
375 mm	75 mm	800 mm	25 mm

CLA 600 L/R



Clamping And Locating Angle 600 L/R

Length	Width	Height	Thick
375 mm	75 mm	600 mm	25 mm

CLA 300 L/R



Clamping And Locating Angle 300 L/R

Length	Width	Height	Thick
275 mm	75 mm	300 mm	25 mm

Universal Tilt Angle

UTA 475



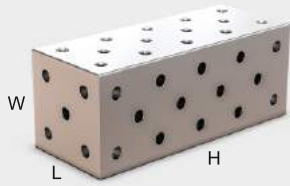
Universal Tilt Angle 475

Length	Width	Height	Thick
475 mm	100 mm	100 mm	25 mm

Spacer Blocks

Spacer Blocks are ideally suited for table extensions or large vertical setups.

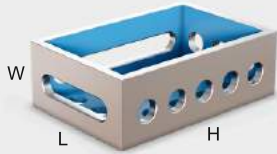
SBU 500 / 1000



Spacer Block U Shape 500 / 1000

Length	Width	Height	Thick
200 mm	200 mm	500 mm	25 mm
200 mm	200 mm	1000 mm	25 mm

SBC 300 / 500 / 1000



Spacer Block C Shape 300 / 500 / 1000

Length	Width	Height	Thick
200 mm	100 mm	300 mm	25 mm
200 mm	100 mm	500 mm	25 mm
200 mm	100 mm	1000 mm	25 mm

Adapter Plate For Flanges

APF 350 / 550



Adapter Plate For Flanges 350 / 550

Length	Width	Thick
350 mm	250 mm	25 mm
550 mm	350 mm	25 mm

Insert Lock Clamp

The standard Insert lock clamp adjusts along the vertical and horizontal axis for precise placement anywhere on the table. 45 and 90 degree clamps pivot and slide to provide a horizontal or diagonal force.

ILC 300L



Insert Lock Clamp 300 L

Width	Height
200 mm	300 mm

ILC 300FL



Insert Lock Clamp 300 FL

Width	Height
200 mm	300 mm

DC 300L



360 Degree Clamp 300L

Width	Height
200 mm	300 mm

SWC 220 / 350 FL



Swing Clamp 220 / 350 FL

Width	Height
-	220 mm
-	350 mm

SDC 220 / 350 L



Swing Degree Clamp 220 / 350 L

Width	Height
220 mm	220 mm
220 mm	350 mm

Ball Lock Bolts

Ball lock Bolts are designed for connecting two FIXTO components together such as table to clamps or clamps to a Spacer Blocks.

BLB 50



Ball lock Bolts 50

Length	Dia
85 mm	28 mm

PB 75



Positioning Bolt 75

Length	Dia
75 mm	28 mm

Toggle Clamps With Base

VTC 300



Vertical Toggle Clamp 300

Length	Dia
75 mm	28 mm

HTC 300



Vertical Toggle Clamp 300

Length	Dia
75 mm	28 mm

V Blocks

V Blocks are used for holding round objects of different sizes. V Blocks are available with permanent work hole adaptors or with a flat bottom. All V Blocks come with locking screws to fix them against the table or fixture work holes.

VB 120 / 90



V Block 120 / 90

Dia	Height
58 mm	50 mm

VBS 120 / 90



V Block With Spacer 120 / 90

Dia	Height
80 mm	180 mm

ASP 100



Adjustable Spacer 100

Dia	Height Adj
80 mm	75 - 100 mm

OCP 75 / 100



Off Center Pad 75 / 100

Dia	Thick
75	25 mm
100	25 mm

TRL D28



Tool Storage Trolley D28

length	Width	Height
1000 mm	800 mm	960 mm

Accessories

CLB30



Cleaning Brush

Dia
30 mm

AK



Allen Key

Dia	Thick
-	-

HS 100

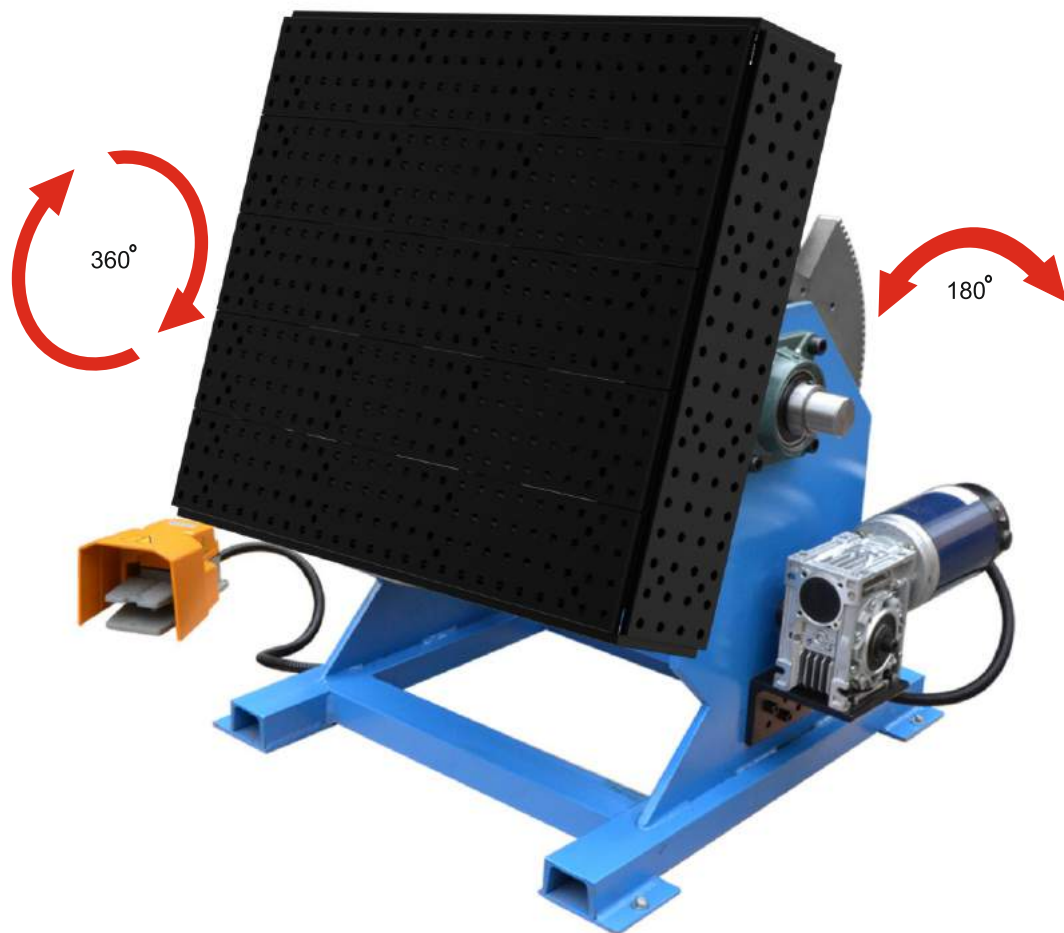


Hoist Shackle

Length	Width
180 mm	100 mm

D28 Clamping Sets

	Set 1	Set 2	Set 3
ILC 300L 	X 4	X 6	X 10
DC 300L 	X 2	X 4	X 6
VB 120 	X 2	X 4	X 4
BLB 50 	X 12	X 18	X 24
US 225 	X 4	X 6	X 8
US 300 	X 4	X 6	X 8
RAB 175L 	X 2	X 4	X 6
RAB 275L 	X 2	X 2	X 2
CLA 300 L/R 		X 2	X 2
CLA 600 L/R 			X 2
TRL D28 			X 1



500 + **FIXTO**[®] Welding Table Clients All Over The World



FIXTO



Authorised Distributor

FIXTO[®]
FIXTURE TOOLS

Contact us:

Jivdani Industrial Estate, Unit No. C13,
Dhumal Nagar, Waliv, Vasai (E),
Palghar 401 208, India

Ph.: 07770012075 / 76
E-mail: info@fixto.in
Website: www.fixto.in