

■ PRO-5 PB | PORTABLE PIPE BEVELLER



PRO-5 PB is a handy, portable pipe beveling machine suitable for milling edges of pipes made of carbon and stainless steels, aluminum alloys and copper-nickels.

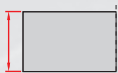
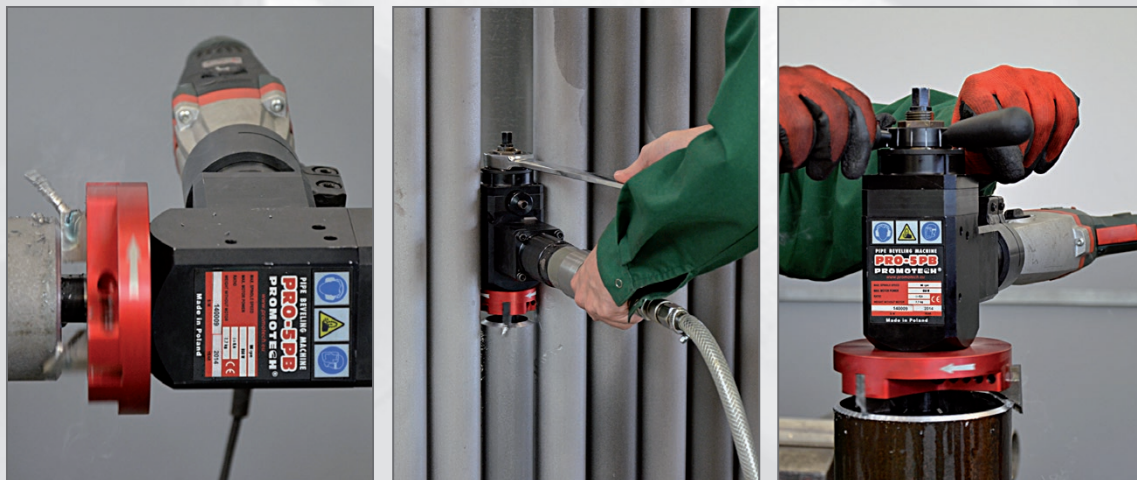
It can be used efficiently by a single operator. Self-centering expandable mandrels provide quick and proper alignment to a pipe or a tube prior to machining operations.

Depending on the tool bits in use PRO-5 PB can perform external beveling, J-beveling, internal calibration and facing pipes from inside diameters of 32 mm (1.26") to outside diameters of 114 mm (4.49") or up to 140 mm (5.51") as option.

All these weld prep operations are made fast and easy. Up to three tool bits can be mounted and work, simultaneously.

According to users preferences and depending on site conditions PRO-5 PB machine can be operated with a high quality powerful pneumatic motor, top quality high torque electric motor or battery drive.

Optional small spindle disc and ratchet wrench enable pipe machining in difficult to access and space restricted areas.



Max wall thickness
12 mm (0.47")
up to OD 114 mm
(4.49")



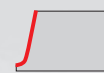
ID 32-107 mm (1.26-4.21")
25-32 mm (1-1.25") (option)
107-133 mm (4.21-5.24") (option)



Facing off



Pipe OD beveling
114 mm (4.49")
up to 140 mm (5.51") (option)



J-groove beveling

Technical specifications		PRO-5 PB with electric motor	PRO 5-PB with pneumatic motor	PRO 5-PB with battery motor
Electric motor		1.100 W	-	
Voltage		1~ 110-120 V, 50-60 Hz 1~ 220-240 V, 50-60 Hz	-	18 V DC, 5.2 Ah
Rotational speed (nominal)		0-113 rpm (gear 1) 0-318 rpm (gear 2)	90 rpm	
Pneumatic drive		-	800 W	
Air requirement		-	0,6 MPa (87 PSI)	
Air consumption		-	1600 l/min (49.4 CFM)	
Pipe diameter			32 mm ID to 114 mm OD (1.26-4.49") ID 25-32 mm (1" - 1.25") /option/ ID 107-133mm (4.21" - 5.24") /option/	
Maximum pipe wall thickness for outside diameter	up to 114 mm	12 mm (0.47")	12 mm (0.47")	12 mm (0.47")
	114-124 mm*	10 mm (0.39")	10 mm (0.39")	10 mm (0.39")
	124-132 mm*	8 mm (0.31")	8 mm (0.31")	8 mm (0.31")
	132-140 mm*	6 mm (0.24")	6 mm (0.24")	6 mm (0.24")
Weight (incl. motor)		11 kg (24 lbs)	10 kg (22 lbs)	10 kg (22 lbs) includes battery

* Available with the optional 140 mm spindle disk set.

Standard shipping set:

- PRO-5 PB (without motor, tool bits)
- Metal box
- Standard self-centering expandable mandrel for pipe ID \varnothing 32 - 107 mm (1.26 - 4.21")
- 118 mm spindle disc
- Jaw blocks (1,2,3,4,5,6) - 3 sets
- Set of tools
- Coolant container
- Operator's Manual

Product Code: UKS-0472-10-00-00-0



Electric motor 230V with connection set



Electric motor 230V
Product Code: SLN-000238

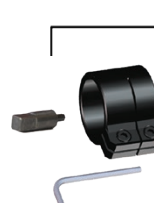
Connection set for electric motor
Product Code: ZST-0472-11-00-00-1

Pneumatic motor

Product Code:
NPD-0472-03-00-00-0



Battery drive 18V
with connection set



Connection set for battery drive
Product Code: ZST-0472-22-00-00-0

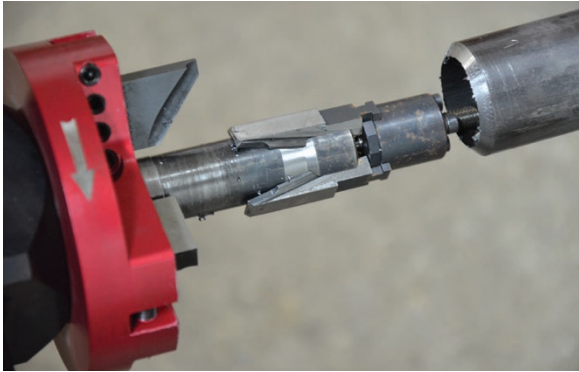


Battery drive for PRO-5 beveller
incl. 2 batteries 18 V, 5.2 Ah
Product Code: WRT-000021

Optional accessories:



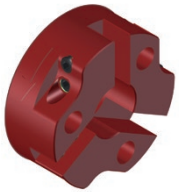
Small mandrel
ID 25 – 32 mm (1"-1-1/4")
Product Code: TRZ-0472-21-00-00-0



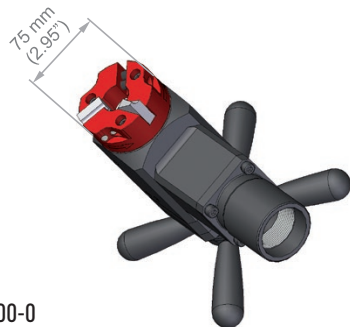
Battery charger 18 V
Product Code for Europe: LDW-000008
Product Code for USA: LDW-000009
Product Code for UK: LDW-0000010



Battery 18 V, 5.2 Ah
Product Code: AKM-000088



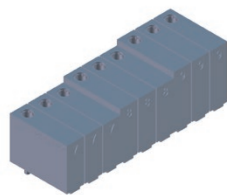
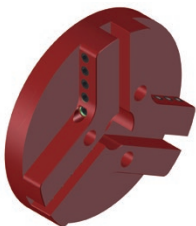
75 mm spindle disc
Product Code: TRC-0472-12-00-00-0



Minimum distance between tubes
is 75 mm (2.95")



Ratchet wrench
Product Code: KLC-000045



Extension set for OD Ø up to 140 mm (5.51") including 140 mm spindle disc and jaw blocks (7, 8, 9) – 3 sets
Product Code: ZST-0472-15-00-00-0



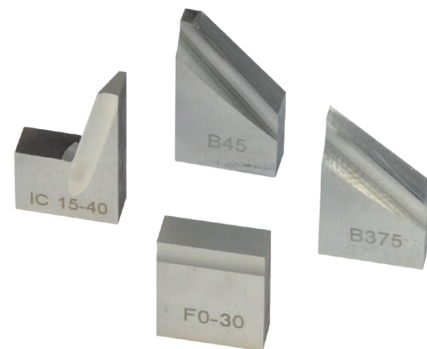
NOZ-000031 for steel NOZ-000067 for stainless steel	F0-30 0° facing tool bit	
NOZ-000032 for steel NOZ-000034 for stainless steel	B30 30° bevelling tool bit*	
NOZ-000033 for steel NOZ-000035 for stainless steel	B30d 30° bevelling tool bit**	
NOZ-000036 for steel NOZ-000038 for stainless steel	B375 37.5° bevelling tool bit*	
NOZ-000037 for steel NOZ-000039 for stainless steel	B375d 37.5° bevelling tool bit**	
NOZ-000040 for steel	B45 45° bevelling tool bit*	
NOZ-000041 for steel	B45d 45° bevelling tool bit**	

Tool bits for stainless steel feature TiAlN coating

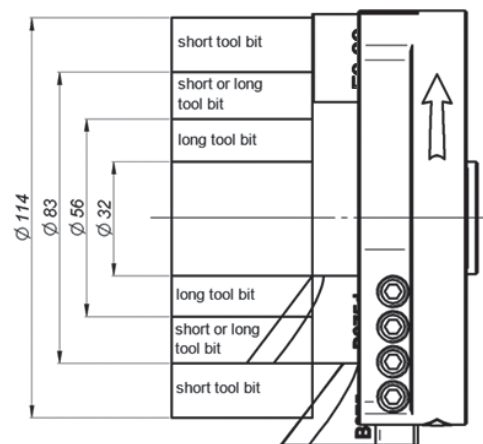
* for diameters over 56 mm, if works together with 0° facing tool bit

** for diameters under 83mm, if works together with 0° facing tool bit

NOZ-000052 for steel	IC15-40 15° internal calibration tool bit	
NOZ-000053 for steel	IC15-40 15° internal calibration tool bit (for Φ over 56 mm)	
NOZ-000087 for steel	IB12-60 12° internal bevelling	
NOZ-000058 for steel	J10-R6 10° J-bevelling tool bit	
NOZ-000057 for steel	J15-R2 15° J-bevelling tool bit	
NOZ-000059 for steel	J20-R8 20° J-bevelling tool bit	
NOZ-000088 for steel	J20-R1 20° J-bevelling tool bit	



Wide range of tool bits for various applications.



Together with 0° facing tool bit either standard or long beveling tool bits are in use depending on pipe diameter



Stainless steel machining is available by means of special tool bits



HD-CUT OIL 1 - tapping, drilling and machining fluid product codes:
OLJ-0505-09-00-00 (0.5 kg)
OLJ-0505-10-00-00 (1.0 kg)
OLJ-0505-11-00-00 (5.0 kg)



Air preparation set
Product Code:
ZST-000021

All information is subject to change without notice. 21.1.11



PROMOTECH Sp. z o.o.
ul. Elewatorska 23/1, 15-620 BIAŁYSTOK, POLAND
tel. (+48 85) 678 34 05, fax (+48 85) 662 78 77
marketing@promotech.eu www.promotech.eu

Your local dealer:

