



# 2022

# NEW RELEASE

## WZM-200

### AUTOGENOUS WELDING SYSTEM



### Tube diameter 6-156mm

Food Machinery ■ Pharmaceutical equipment ■ Water processing

# AUTOMATIC TUBE-TO-TUBE WELDING SYSTEM

## WZM-200

WZM-200 closed tube-to-tube automatic welding machine is a special all-position automatic TIG equipment designed for all kinds of tube fitting joints. It adopts the welding method without filler wire, which is widely applied in electronics, chemical engineering, food/beverage, air conditioner, pharmaceuticals/medical equipment, instruments and apparatus, aerospace, engineering installation, nuclear and other industries.

- **Small and light welding head:** Easy operation with no need of manual interference
- **7-inch touch screen:** friendly and visualized programming interface with simple and easy operating method
- **Long-life motor:** high-quality DC core-less servo motor enjoys stable performance and long service life
- **Unlimited rotation:** not entangled by water hoses, electric wires, and gas hoses
- **Save and recall 60 sets of parameters:** Up to 60 sets of parameters can be saved and recalled, and one process can be divided into up to 16 sectors
- **Abundant expert database:** The welding programs can be generated automatically according to different pipe diameters and wall thickness
- **Built-in printer:** Automatically print welding parameters for convenient filing



# POWER SOURCE AND ACCESSORIES

## POWER SOURCE

### Features and Benefits

- Water-cooled integrated type machine
- 7-inch touch screen
- Standardly equipped with printer
- CC/pulsed current control
- Rotation control
- Argon gas control

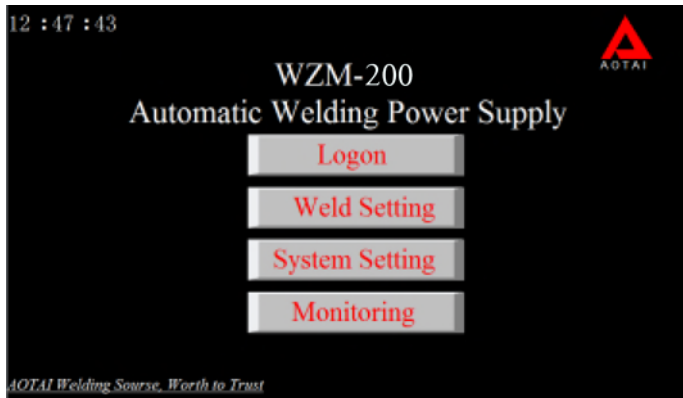


### PRODUCT SPECIFICATIONS

Item	Parameter
Model	WZM-200
Purpose	Realizing all-position TIG tube-to-tube welding
Welding current	10~200A
Duty cycle (40℃)	200A 35% / 153A 60% / 118A 100%
OCV	60V
Input voltage/frequency	AC220V±15%, 50Hz
Cooling method of welding torch	Liquid cooling
Display	7-inch touch screen
Control function	DC/Pulsed current Rotation Wire feeding control Arc length control Shielding gas control Print control
Programs storage capacity	60
The number of divided sectors	1~16
Protection/Insulation class	IP21S/F
Weight (without coolant)	16.4Kg
Dimension	440×200×410mm
Operating environment	Indoors temperature: -10℃~+40℃ Humidity: ≤ 95%



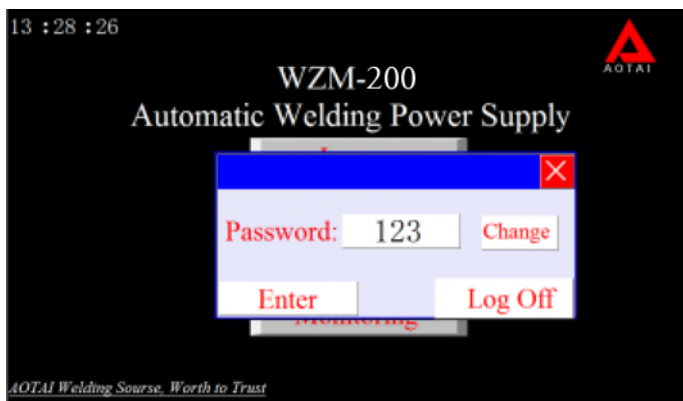
# TOUCH SCREEN CONTROL INTERFACE



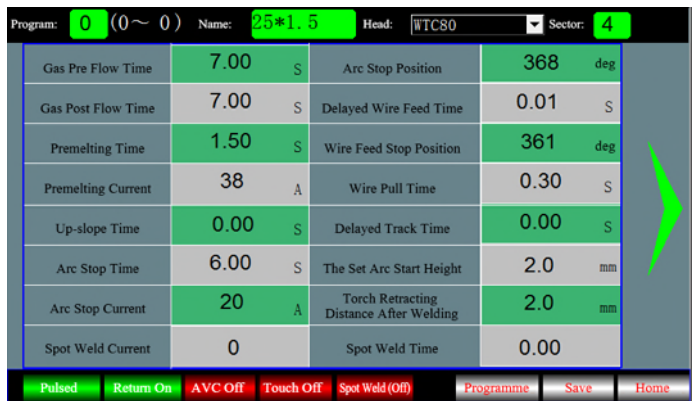
Main interface

## Features and Benefits

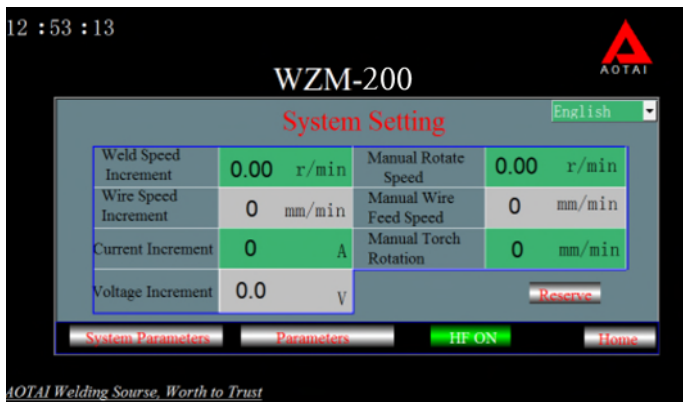
- Inverter technology, high reliability, energy saving.
- 7-inch touch screen control interface, intuitive image, easy to operate.
- 60 sets of welding specs can be stored and recalled, saving operating time.



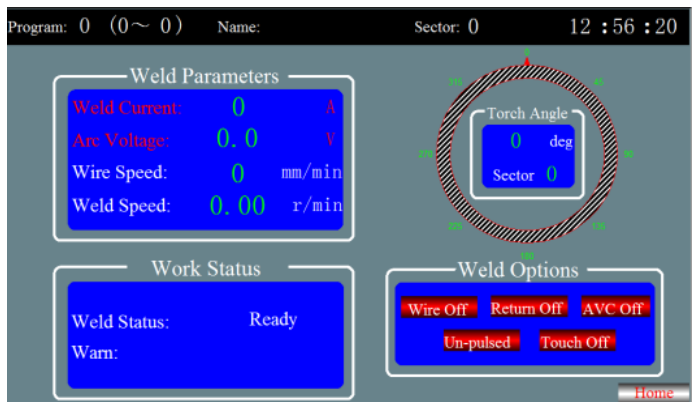
Login interface



Welding parameters setting interface



System setting interface



Real-time welding monitoring interface



# TUBE-TUBE WELDING HEAD -WTC SERIES



▪ WTC18

▪ WTC40

▪ WTC80

▪ WTC118

▪ WTC158

## Summary

- Mainly used for all-position, self- fusion, tube-tube welding
- Mainly suitable for thin-wall tube-tube welding of stainless steel, titanium alloy, etc.

## Application area

Electronic, chemical, food/drinking water, air conditioner, medicine/medical equipment, instrument & meter, aviation/aerospace, engineering installation and nuclear power , etc.

## Features & Benefits

- Small size, light weight, simple operation, zero requirement for welder skill
- Flexible automatic centering fixture, accurate positioning, safe and reliable.
- Closed-type welding ensures welding quality.
- Infinite rotation device avoids water, power, and gas winding.
- Water cooled, high duty cycle
- Common function keys on welding head make it convenient for fast welding.

## PRODUCT SPECIFICATIONS

Item	Parameter				
Model	WTC18	WTC40	WTC80	WTC118	WTC158
Weldable material	Carbon steel, stainless steel, titanium and titanium alloy etc.				
Tube diameter	Φ6~Φ12.7mm	Φ6~Φ38.1mm	Φ19.05~Φ76.2mm	Φ38.1~Φ101.6mm	Φ50.8~Φ152.4mm
Tube thickness (mm)	≤2mm				
Torch rotation speed	0.3~6.0rpm	0.2657~5.3145rpm	0.194~3.877rpm	0.092~1.924rpm	0.073~1.472rpm
Maximum welding current	60A	Duty cycle 40%@85A Duty cycle 60%@65A Duty cycle 100%@45A	Duty cycle 40%@100A Duty cycle 60%@75A Duty cycle 100%@55A	Duty cycle 40%@120A Duty cycle 60%@100A Duty cycle 100%@80A	Duty cycle 40%@120A Duty cycle 60%@90A Duty cycle 100%@75A
Protection gas	Argon	Argon	Argon	Argon	Argon
Cooling	Water cooled	Water cooled	Water cooled	Water cooled	Water cooled
Cooling water flow	≥450mL/min	≥450mL/min	≥450mL/min	≥450mL/min	≥450mL/min
Weight	2.0kg	3.5kg	5.0kg	6.5kg	10kg
Dimension	292*96*34mm	377*70*42mm	436*156*44.5mm	540*195*54mm	577*255*56mm
Power source	WZM200				

## REMOTE CONTROLLER



- Fine adjust welding parameter, perfect control whole welding process.
- Realize real time welding parameter modification.
- LCD on-hand controller can real-timely show welding parameter, faulty information like over-heat or over current, and welding stage like HF arc ignition.
- Multi-function buttons save space, make interface simple, beautiful and powerful, improve the cost-efficacy.

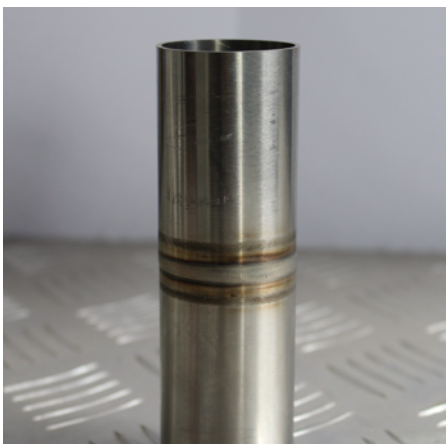
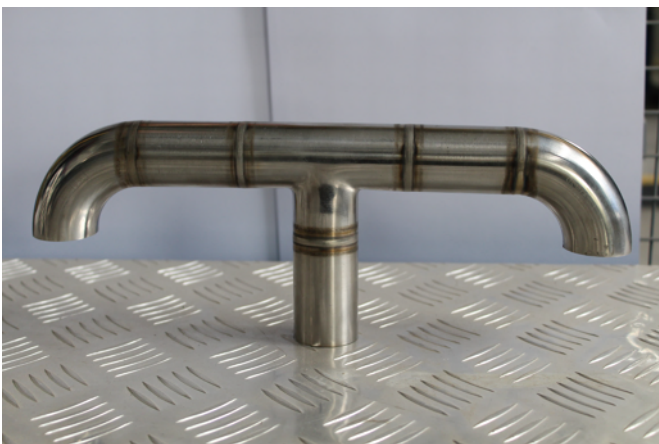


# INDUSTRY APPLICATION

WTC158



WTC80



PUBLICATION 01 | ISSUE DATE 2/22  
© AOTAI GLOBAL, INC. ALL RIGHTS RESERVED.

AOTAI ELECTRIC CO.,LTD  
SMART ■ STABLE ■ POWERFUL

For more detailed  
information, visit

